

PROJECT PROGRESS REPORT

FEBRUARY 2023



DEVELOPER:



SAS e GLUT JV Pvt Ltd

CONTRACTOR:



GLUT Investments
private limited

PROJECT TITLE: MIXED USE RESIDENTIAL COMPLEX AT HULHUMALE (THE CREEK VIEW)
DEVELOPER: SASe GLUT JV PVT. LTD.
CONTRACTOR: GLUT INVESTMENTS PVT. LTD.
LOCATION: LOT NO: S1-3, LOT: 11445 HULHUMALE', MALDIVES

PROJECT BREIF:

The Creek View at Hulhumale Phase-1 is a pristine, spacious condominium project brought to you by the company SASe Glut Joint-venture Private Limited. The development is located at Lot 11445, Kuredhimaa Hingun overseeing the creek separating phase I and phase II of Hulhumale'.

The building comprises 114 apartments with 2 room, 3 room and 4 room units, each carefully designed to ensure the separation of spaces with special attention given to privacy and offer a homely feeling. Each apartment has a mini backyard with access from the kitchen. The kitchens are designed as enclosed spaces separated by masonry and glass partitions.

The apartment units are designed to make the most of natural air and light ventilation with floor to ceiling high windows. These large windows are also placed with an offset from the periphery to prevent direct sun and rain exposure. As many prefer to shape every element of their home environment, carefully choosing their furniture, curtain & paint, we find it best to engage prospective tenants during the interior design process. Those looking to occupy the new home hassle-free have the option to choose from fully fitted, furnished units that come in a different configuration of colour, style & décor.

The access to the residential units is well separated from the commercial area on the ground and the first floor to ensure privacy and safety to tenants. In addition, the entrance lobby is designed with a waiting & meeting area for visitors, limiting visitors' access to apartment floors.

Parking is arranged at the basement, ground and first floor with the basement exclusively for car parking. Amenities such as the pool and playgrounds are at ground level. At the same time, all utility services are located at the service lobby to avoid direct contact with any service team member. A separate service elevator will be allocated for the use of the service team for transporting furniture items and trash bins.

1.0 PROJECT PROGRESS REPORT BREIF

- 1.1 All permits and project documentation requirements are submitted and process accordingly.
- 1.2 Drawings and details are submitted and approved.
- 1.3 All land concern and preparation are addressed in coordinated according to the local government requirements.
- 1.4 All necessary activities and preparation are in progress.

2.0 CURRENT STATUS

2.1 Materials and Equipment's Procurement

2.1.1 Material and Equipment Received

2.1.1.1 External Lift Machine

2.2 Project Progress Meeting by HDC

2.2.1 Date: No Meeting was conducted

2.3 Site Coordination Meeting with Consultants

2.3.1 Date: Feb. 28, 2023

2.4 Issue for Construction Drawing

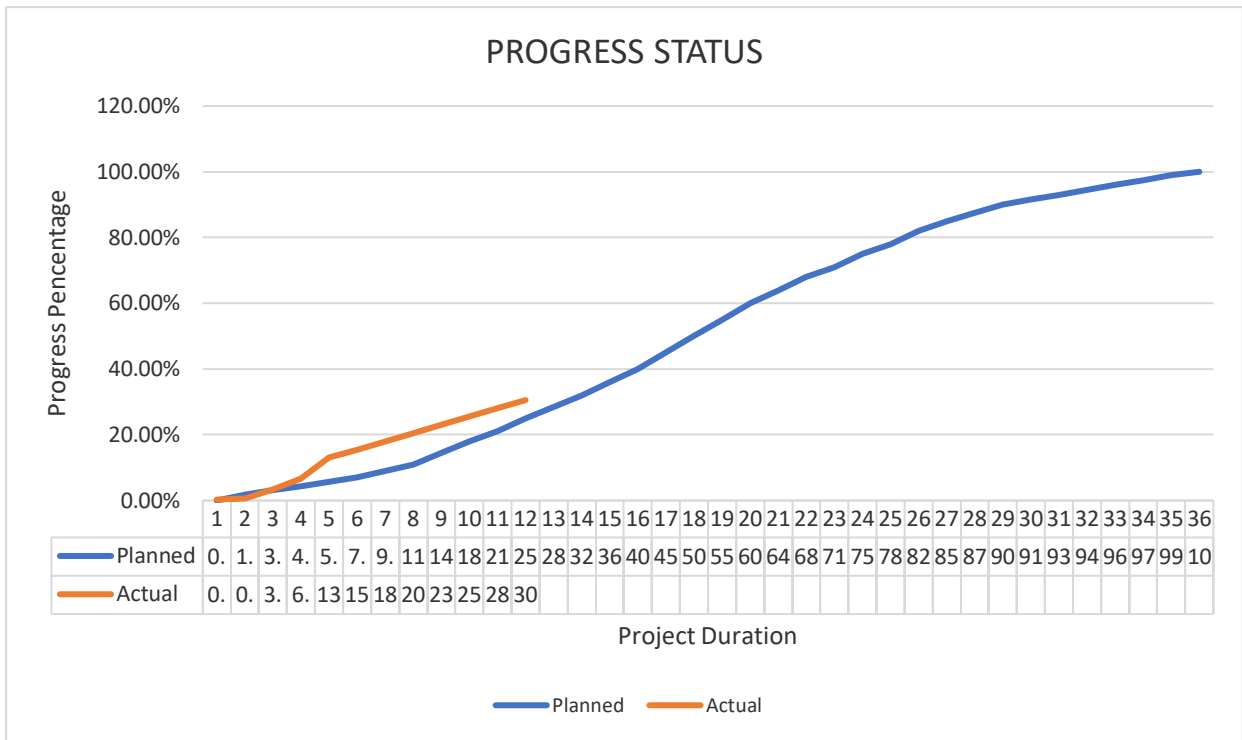
2.4.1 Structural drawings

2.4.1.1 Structural Floor Plans – Partial Received

2.4.2 Architectural drawings

2.4.2.1 Architectural Floor Plans – Partial Received

2.5 Project Status



3.0 ONGOING/COMPLETED WORKS

- 3.1 Fourth floor columns, lift wall and stair reinforcement fabrication and installation
- 3.2 Fourth floor columns, lift wall and stair formworks fabrication and installation
- 3.3 Concrete casting for fourth floor columns, lift wall and stair
- 3.4 Fifth floor beam and slab formworks fabrication and installation
- 3.5 Fifth floor beam and slab reinforcement fabrication and installation
- 3.6 Concrete casting for fifth floor beam and slab (6th slab)
- 3.7 Fifth floor columns, lift wall and stair reinforcement fabrication and installation
- 3.8 Fifth floor columns, lift wall and stair formworks fabrication and installation
- 3.9 Concrete casting for fifth floor columns, lift wall and stair
- 3.10 Sixth floor beam and slab formworks fabrication and installation
- 3.11 Second floor masonry works preparation
- 3.12 Second and Third floor de-shuttering works
- 3.13 Safety net installation

4.0 UPCOMING WORKS FOR NEXT MONTH

- 4.1 Sixth floor beam and slab formworks fabrication and installation
- 4.2 Sixth floor beam and slab reinforcement fabrication and installation
- 4.3 Concrete casting for Sixth floor beam and slab (7th slab)
- 4.4 Sixth floor columns, lift wall and stair reinforcement fabrication and installation
- 4.5 Sixth floor columns, lift wall and stair formworks fabrication and installation
- 4.6 Concrete casting for sixth floor columns, lift wall and stair
- 4.7 Seventh floor beam and slab formworks fabrication and installation
- 4.8 Seventh floor beam and slab reinforcement fabrication and installation
- 4.9 Seventh floor columns, lift wall and stair reinforcement fabrication and installation
- 4.10 Seventh floor columns, lift wall and stair formworks fabrication and installation
- 4.11 Concrete casting for seventh floor columns, lift wall and stair
- 4.12 Basement ramp slab reinforcement fabrication and installation
- 4.13 Fourth & Fifth floor de-shuttering work
- 4.14 Second floor masonry and plastering work
- 4.15 Safety net installation

5.0 ACCIDENT REPORT

- 5.1 No accident reported

6.0 CHALLENGES FACED DURING CONSTRUCTION / IMPLEMENTATION

- 6.1 Weather disturbance due to isolated heavy rains (weather chart)
- 6.2 Delayed drawing approval (Finishing Details)

7.0 INSTRUCTION GIVEN ON SITE

- 7.1 N/A

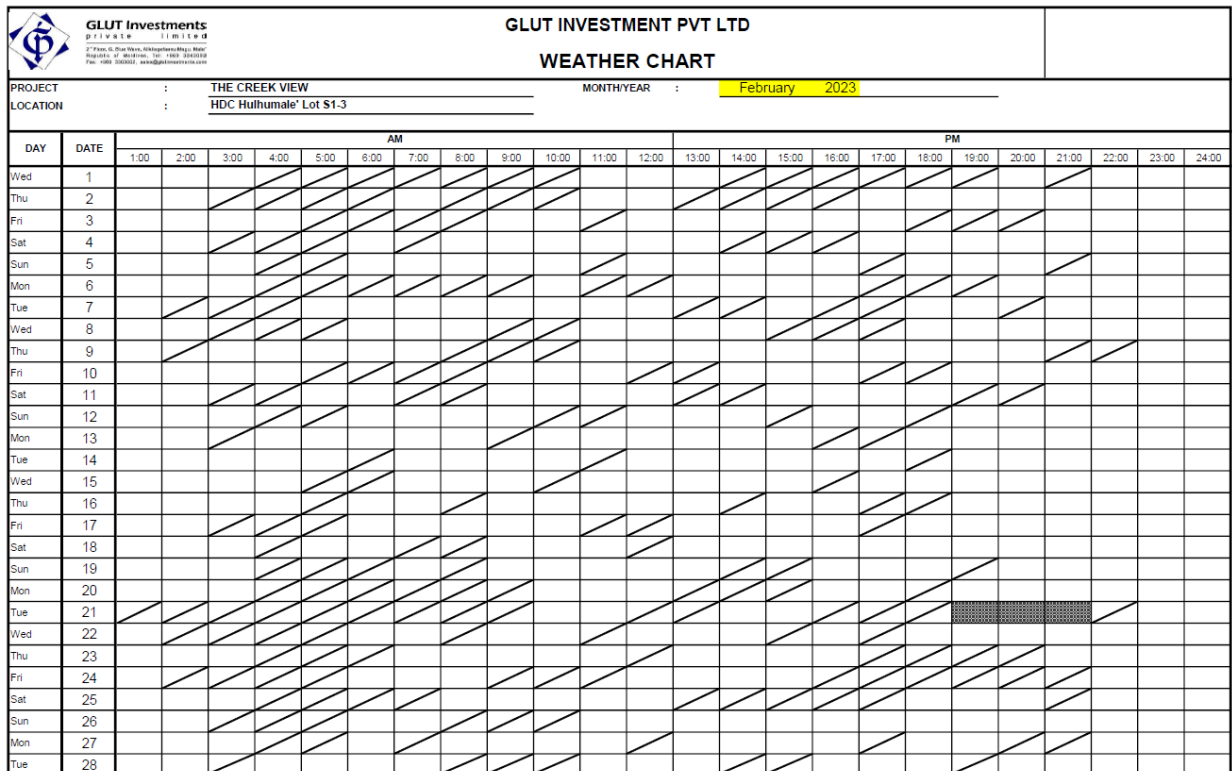
8.0 DOCUMENTATION OF APPROVED MATERIALS

8.1 Cube Test Report

- 8.1.1 Fourth Floor Slab (5th Slab)
- 8.1.2 Fourth Floor Columns and Lift wall
- 8.1.3 Fifth Floor Slab (6th Slab)

9.0 WEATHER CHART

9.1 February 2023



LEGEND: FAIR/CLOUDY CLOUDY HEAVY RAIN TYPHOON

2022		
Months	Rainy Days	Days to Claim
March	5	5
April	11	11
May	19	19
June	16	16
July	19	19
August	14	14
September	14	14
October	17	17
November	11	11
December	16	16
2023		
January	7	7
February	1	1

10.0 SITE PROGRESS PHOTO

10.1 February 2023 Site Photos



4th Columns Reinforcement



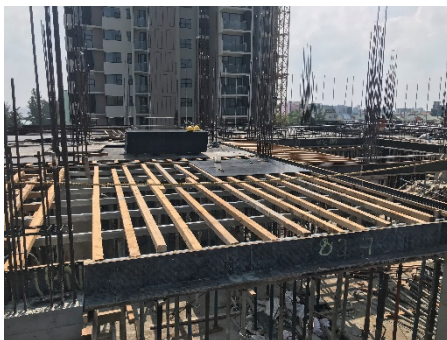
4th Columns Formworks



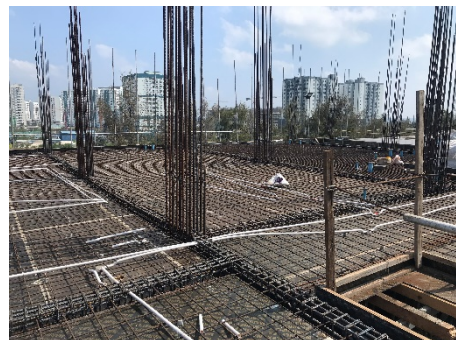
4th Floor Column Concrete Casting



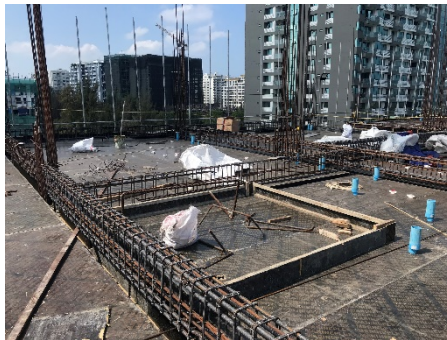
4th Floor Lift Wall Formworks



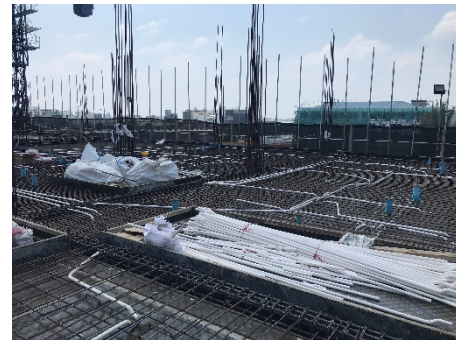
5th Floor Beam & Slab Formworks



5th Floor Beam & Slab Reinforcement



5th Floor Plumbing Sleeve Installation



5th Floor Electrical Sleeve Installation



5th Floor Slab Concrete Casting



5th Floor Column Reinforcement



5th Floor Column Formworks



5th Floor Column Concrete Casting



Safety Net Installation



Safety Toolbox Meeting

PREPARED AND SUBMITTED BY GLUT INVESTMENTS PVT. LTD.

Prepared By:

A blue ink signature of Rodel Rosales.

Rodel Rosales
Civil Engineer (Glut)

Checked By:

A blue ink signature of Ali Riyaz.

Ali Riyaz
Project Consultant