

REPORT NO: CRVW S1-3/2023/1

PROJECT PROGRESS REPORT

JANUARY 2023



DEVELOPER:



SAS e GLUT JV Pvt Ltd

CONTRACTOR:



GLUT Investments
private limited

PROJECT TITLE: MIXED USE RESIDENTIAL COMPLEX AT HULHUMALE (THE CREEK VIEW)
DEVELOPER: SASe GLUT JV PVT. LTD.
CONTRACTOR: GLUT INVESTMENTS PVT. LTD.
LOCATION: LOT NO: S1-3, LOT: 11445 HULHUMALE', MALDIVES

PROJECT BREIF:

The Creek View at Hulhumale Phase-1 is a pristine, spacious condominium project brought to you by the company SASe Glut Joint-venture Private Limited. The development is located at Lot 11445, Kuredhimaa Hingun overseeing the creek separating phase I and phase II of Hulhumale'.

The building comprises 114 apartments with 2 room, 3 room and 4 room units, each carefully designed to ensure the separation of spaces with special attention given to privacy and offer a homely feeling. Each apartment has a mini backyard with access from the kitchen. The kitchens are designed as enclosed spaces separated by masonry and glass partitions.

The apartment units are designed to make the most of natural air and light ventilation with floor to ceiling high windows. These large windows are also placed with an offset from the periphery to prevent direct sun and rain exposure. As many prefer to shape every element of their home environment, carefully choosing their furniture, curtain & paint, we find it best to engage prospective tenants during the interior design process. Those looking to occupy the new home hassle-free have the option to choose from fully fitted, furnished units that come in a different configuration of colour, style & décor.

The access to the residential units is well separated from the commercial area on the ground and the first floor to ensure privacy and safety to tenants. In addition, the entrance lobby is designed with a waiting & meeting area for visitors, limiting visitors' access to apartment floors.

Parking is arranged at the basement, ground and first floor with the basement exclusively for car parking. Amenities such as the pool and playgrounds are at ground level. At the same time, all utility services are located at the service lobby to avoid direct contact with any service team member. A separate service elevator will be allocated for the use of the service team for transporting furniture items and trash bins.

1.0 PROJECT PROGRESS REPORT BREIF

- 1.1 All permits and project documentation requirements are submitted and process accordingly.
- 1.2 Drawings and details are submitted and approved.
- 1.3 All land concern and preparation are addressed in coordinated according to the local government requirements.
- 1.4 All necessary activities and preparation are in progress.

2.0 CURRENT STATUS

2.1 Materials and Equipment's Procurement

- 2.1.1 Material and Equipment Received
 - 2.1.1.1 Mini Backhoe Machine

2.2 Project Progress Meeting by HDC

- 2.2.1 Date: No Meeting was conducted

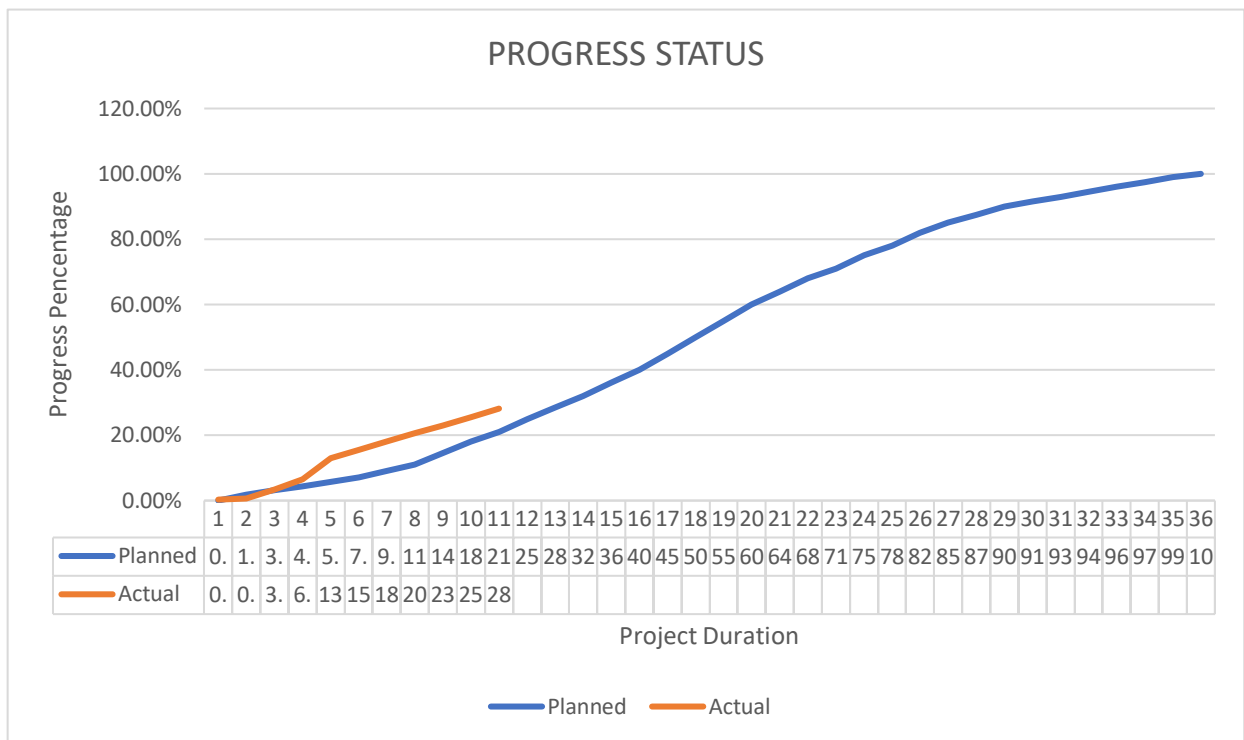
2.3 Site Coordination Meeting with Consultants

- 2.3.1 Date: Jan. 05, 2023

2.4 Issue for Construction Drawing

- 2.4.1 Structural drawings
 - 2.4.1.1 Structural Floor Plans – Partial Received
- 2.4.2 Architectural drawings
 - 2.4.2.1 Architectural Floor Plans – Partial Received

2.5 Project Status



3.0 ONGOING/COMPLETED WORKS

- 3.1 Third floor beam and slab formworks fabrication and installation
- 3.2 Third floor beam and slab reinforcement fabrication and installation
- 3.3 Concrete casting for third floor beam and slab (4th slab)
- 3.4 Third floor columns, lift wall and stair reinforcement fabrication and installation
- 3.5 Third floor columns, lift wall and stair formworks fabrication and installation
- 3.6 Concrete casting for third floor columns, lift wall and stair
- 3.7 Fourth floor beam and slab formworks fabrication and installation
- 3.8 Fourth floor beam and slab reinforcement fabrication and installation
- 3.9 Concrete casting for fourth floor beam and slab (5th slab)
- 3.10 Masonry works at ground floor (Block laying)
- 3.11 Basement ramp slab formworks fabrication and installation
- 3.12 First floor de-shuttering
- 3.13 Safety net installation

4.0 UPCOMING WORKS FOR NEXT MONTH

- 4.1 Fourth floor columns, lift wall and stair reinforcement fabrication and installation
- 4.2 Fourth floor columns, lift wall and stair formworks fabrication and installation
- 4.3 Concrete casting for fourth floor columns, lift wall and stair
- 4.4 Fifth floor beam and slab formworks fabrication and installation
- 4.5 Fifth floor beam and slab reinforcement fabrication and installation
- 4.6 Concrete casting for fifth floor beam and slab (6th slab)
- 4.7 Fifth floor columns, lift wall and stair reinforcement fabrication and installation
- 4.8 Fifth floor columns, lift wall and stair formworks fabrication and installation
- 4.9 Concrete casting for fifth floor columns, lift wall and stair
- 4.10 Sixth floor beam and slab formworks fabrication and installation
- 4.11 Sixth floor beam and slab reinforcement fabrication and installation
- 4.12 Basement ramp slab reinforcement fabrication and installation
- 4.13 Second floor de-shuttering
- 4.14 Safety net installation

5.0 ACCIDENT REPORT

- 5.1 No accident reported

6.0 CHALLENGES FACED DURING CONSTRUCTION / IMPLEMENTATION

- 6.1 Weather disturbance due to isolated heavy rains (weather chart)

7.0 INSTRUCTION GIVEN ON SITE

- 7.1 N/A

8.0 DOCUMENTATION OF APPROVED MATERIALS

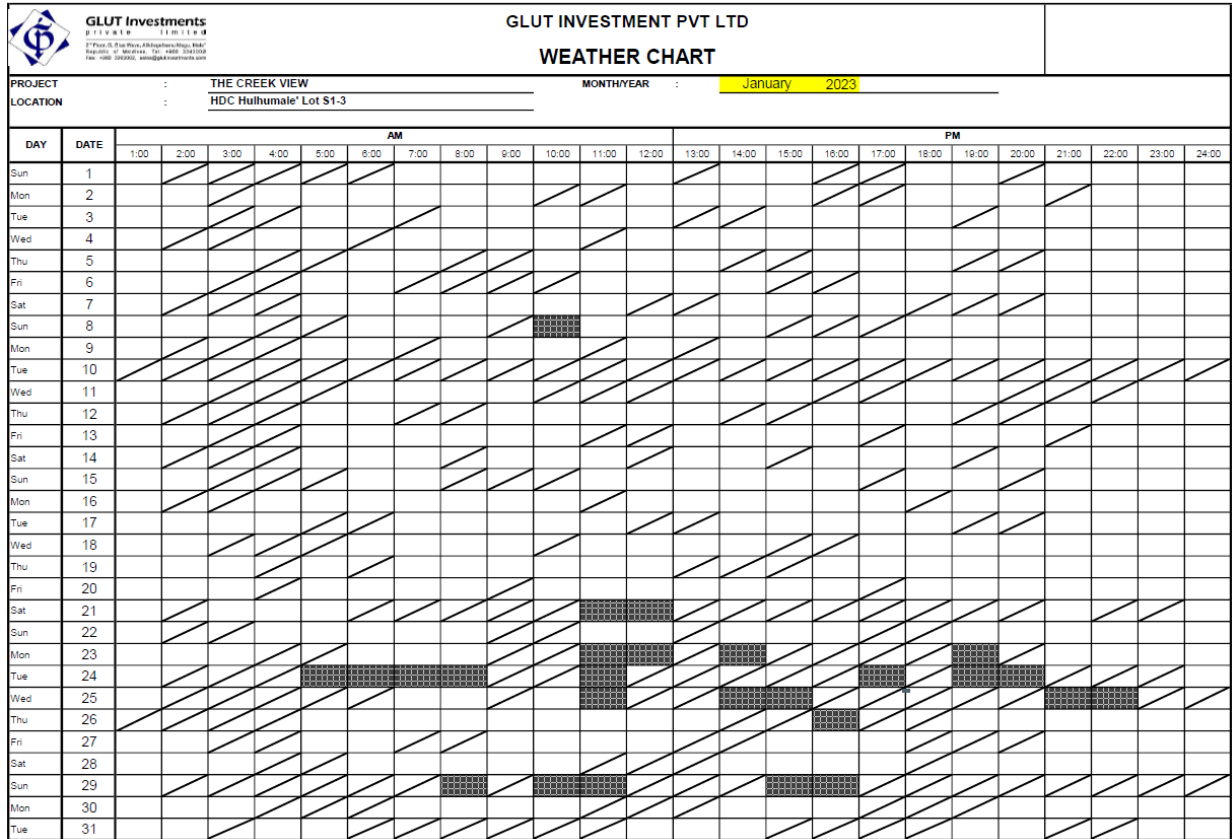
- 8.1 Cube Test Report

8.1.1 Third Floor Slab (4th Slab)

8.1.2 Third Floor Columns and Lift wall

9.0 WEATHER CHART

9.1 January 2023



LEGEND: FAIR/CLOUDY CLOUDY HEAVY RAIN TYPHOON

2022		
Months	Rainy Days	Days to Claim
March	5	5
April	11	11
May	19	19
June	16	16
July	19	19
August	14	14
September	14	14
October	17	17
November	11	11
December	16	16
2023		
January	7	7

10.0 SITE PROGRESS PHOTO

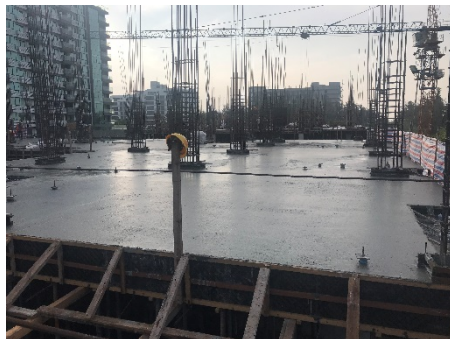
10.1 January 2023 Site Photos



3rd Floor Slab and Beam Formworks



3rd Floor Slab and Beam Reinforcement



3rd Floor Slab Concrete Casting



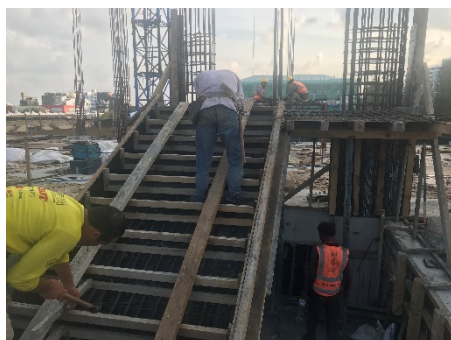
3rd Floor Column & Lift Reinforcement



3rd Floor Column Formworks



3rd Floor Column Concrete Casting



Stair-2 reinforcement & Shuttering



First Floor Slab De-shuttering



4th Floor Slab and Beam Formworks



4th Floor Slab and Beam Reinforcement



4th Floor Slab Concrete Casting



Ground Floor Slab Masonry Work



Basement Ramp Formworks



Safety Net Installation

PREPARED AND SUBMITTED BY GLUT INVESTMENTS PVT. LTD.

Prepared By:

A blue ink signature of Rodel Rosales.

Rodel Rosales
Civil Engineer (Glut)

Checked By:

Ali Riyaz
Project Consultant