

# PROJECT PROGRESS REPORT

OCTOBER 2023



**DEVELOPER:**



SAS e GLUT JV Pvt Ltd

**CONTRACTOR:**



**GLUT Investments**  
private limited

**PROJECT TITLE:** MIXED USE RESIDENTIAL COMPLEX AT HULHUMALE (THE CREEK VIEW)  
**DEVELOPER:** SASe GLUT JV PVT. LTD.  
**CONTRACTOR:** GLUT INVESTMENTS PVT. LTD.  
**LOCATION:** LOT NO: S1-3, LOT: 11445 HULHUMALE', MALDIVES

**PROJECT BREIF:**

The Creek View at Hulhumale Phase-1 is a pristine, spacious condominium project brought to you by the company SASe Glut Joint-venture Private Limited. The development is located at Lot 11445, Kuredhimaa Hingun overseeing the creek separating phase I and phase II of Hulhumale'.

The building comprises 114 apartments with 2 room, 3 room and 4 room units, each carefully designed to ensure the separation of spaces with special attention given to privacy and offer a homely feeling. Each apartment has a mini backyard with access from the kitchen. The kitchens are designed as enclosed spaces separated by masonry and glass partitions.

The apartment units are designed to make the most of natural air and light ventilation with floor to ceiling high windows. These large windows are also placed with an offset from the periphery to prevent direct sun and rain exposure. As many prefer to shape every element of their home environment, carefully choosing their furniture, curtain & paint, we find it best to engage prospective tenants during the interior design process. Those looking to occupy the new home hassle-free have the option to choose from fully fitted, furnished units that come in a different configuration of colour, style & décor.

The access to the residential units is well separated from the commercial area on the ground and the first floor to ensure privacy and safety to tenants. In addition, the entrance lobby is designed with a waiting & meeting area for visitors, limiting visitors' access to apartment floors.

Parking is arranged at the basement, ground and first floor with the basement exclusively for car parking. Amenities such as the pool and playgrounds are at ground level. At the same time, all utility services are located at the service lobby to avoid direct contact with any service team member. A separate service elevator will be allocated for the use of the service team for transporting furniture items and trash bins.

## 1.0 PROJECT PROGRESS REPORT BREIF

- 1.1 All permits and project documentation requirements are submitted and process accordingly.
- 1.2 Drawings and details are submitted and approved.
- 1.3 All land concern and preparation are addressed in coordinated according to the local government requirements.
- 1.4 All necessary activities and preparation are in progress.

## 2.0 CURRENT STATUS

### 2.1 Materials and Equipment's Procurement

#### 2.1.1 Material and Equipment Received

##### 2.1.1.1 Steel Bars, Cement, Sand, Aggregates & Blocks

### 2.2 Project Progress Meeting by Urbanco

#### 2.2.1 Date: No Meeting was conducted

### 2.3 Site Coordination Meeting with Consultants

#### 2.3.1 Date: 10.Oct.2023

### 2.4 Site Coordination Meeting with Sase – Glut

**None**

### 2.5 Issue for Construction Drawing

#### 2.5.1 Structural drawings

##### 2.5.1.1 Structural Floor Plans – Partial Received

#### 2.5.2 Architectural drawings

##### 2.5.2.1 Architectural Floor Plans – Partial Received

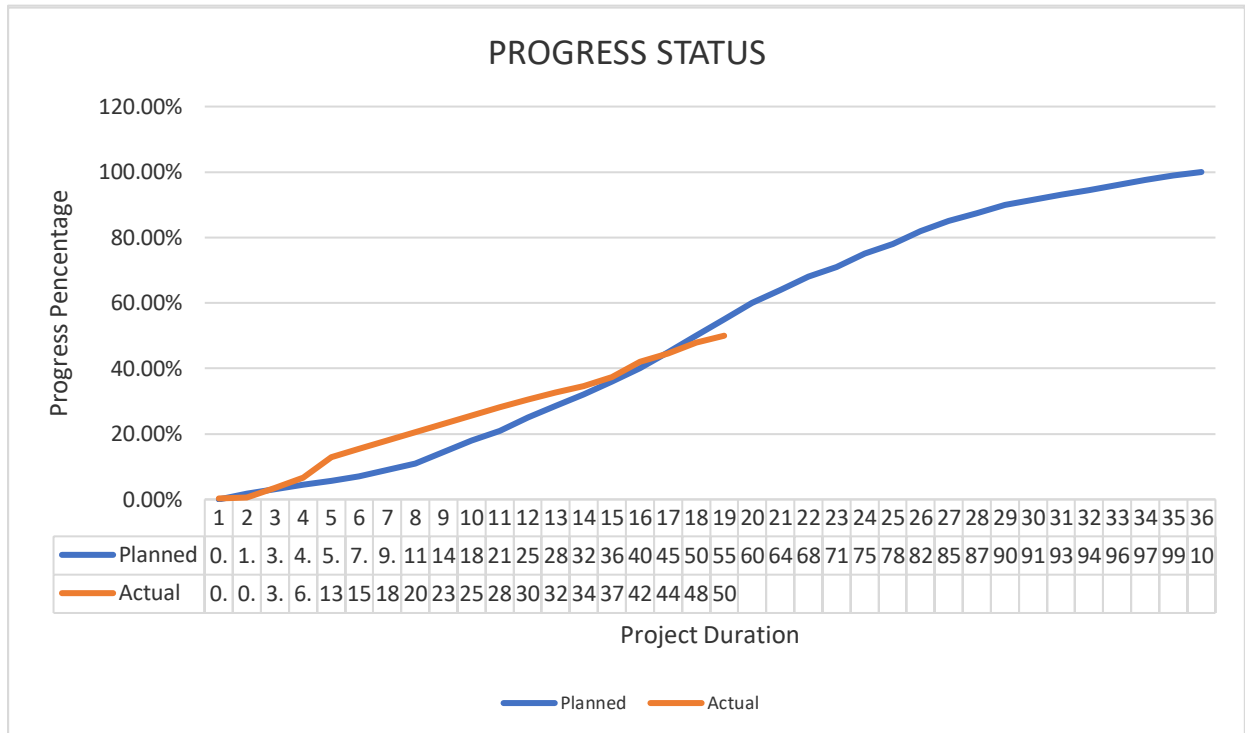
#### 2.5.3 Electrical drawings

##### 2.5.3.1 Electrical Floor Plans – Partial Received

#### 2.5.4 Electrical drawings

##### 2.5.4.1 Plumbing Floor Plans – Partial Received

### 2.6 Project Status



### 3.0 ONGOING/COMPLETED WORKS

- 3.1 13<sup>th</sup> floor beam and slab casting.
- 3.2 11<sup>th</sup> floor slab soffit de-shuttering works
- 3.3 9 and 10<sup>th</sup> floor block work completed.
- 3.4 Eleventh floor masonry preparation
- 3.5 Eleventh floor concrete kicker preparation
- 3.6 Third and second floor internal plastering completed
- 3.7 4,5,6 floor internal plastering completed
- 3.8 7,8 floor internal plastering started
- 3.9 Safety net installation and scaffolding internal perimeter

### 4.0 UPCOMING WORKS FOR NEXT MONTH

- 4.1 Terrace floor columns, lift wall and stair reinforcement fabrication and installation
- 4.2 Terrace floor columns, lift wall and stair formworks fabrication and installation
- 4.3 Concrete casting for Terrace floor columns, lift wall and stair
- 4.4 twelft floor slab soffit de-shuttering work
- 4.5 10<sup>th</sup> and 11<sup>th</sup> floor plastering work
- 4.6 Safety net installation and internal perimeter scaffolding installation

## **5.0 ACCIDENT REPORT**

5.1 No accident was reported

## **6.0 CHALLENGES FACED DURING CONSTRUCTION / IMPLEMENTATION**

6.1 Weather disruption due to heavy wind and rain (see weather chart–9.0)

## **7.0 INSTRUCTION GIVEN ON SITE**

7.1 Minutes of meeting dated: 5 Oct 2023, 12 Oct 2023, 19 Oct 2023 and 26 Oct 2023.

## **8.0 DOCUMENTATION OF APPROVED MATERIALS**

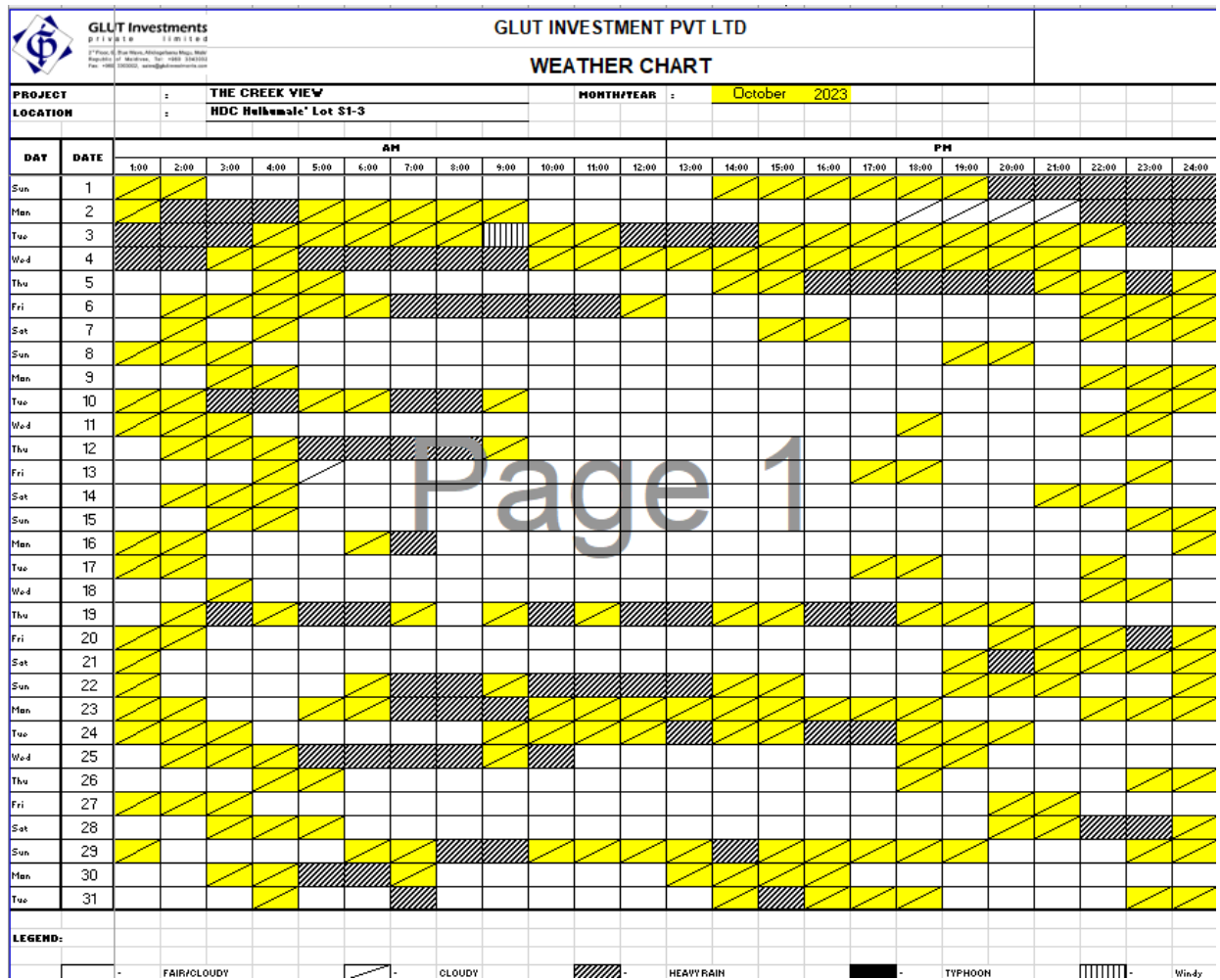
8.1 Cube Test Report

8.1.1 Twelfth floor slab

8.1.2 Twelfth Floor Columns and Lift wall

## **9.0 WEATHER CHART**

9.1 September 2023



2022		
Months	Rainy Days	Days to Claim
March	5	5
April	11	11
May	19	19
June	16	16
July	19	19
August	14	14
September	14	14
October	17	17
November	11	11
December	16	16
2023		
January	7	7
February	1	1
March	9	9
April	10	10
May	10	10
June	13	13
July	9	9
August	12	12
September	12	12
October	20	20



**10.0 SITE PROGRESS PHOTO**

10.1 OCT 2023 Site Photos



13th Floor Slab Casted.



13th Floor Beam Reinforcement



13th Floor Electrical & Plumbing Sleeve



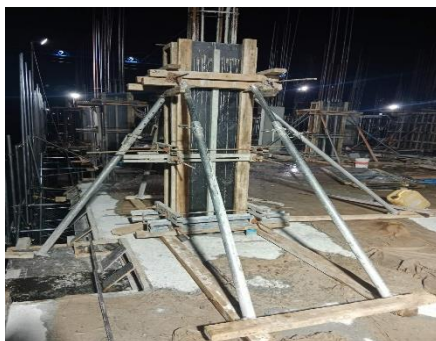
13th Floor Slab Concrete Curing



13th Floor Slab casting work



13th Floor Column Formworks



12th Floor Columns Concrete Casting



13th Floor slab casting



10<sup>th</sup> floor kicker inspection



5th Floor Blocks Laying



6<sup>th</sup> floor plastering



7<sup>th</sup> floor plastering



Safety Net installation



Safety Net Installation



5<sup>th</sup> floor plumbing wall chasing



6<sup>th</sup> floor plumbing wall chasing





5<sup>th</sup> floor Plastering



6<sup>th</sup> floor Plastering

PREPARED AND SUBMITTED BY GLUT INVESTMENTS PVT. LTD.

**Prepared By:**

Anandaraj  
Civil Engineer (Glut)

**Checked By:**

Mohammed Shamin  
Project Consultant