

REPORT NO: CRVW S1-3/2024/07

# PROJECT PROGRESS REPORT

JULY 2024



**DEVELOPER:**



SAS e GLUT JV Pvt Ltd

**CONTRACTOR:**



**GLUT Investments**  
private limited

**PROJECT TITLE:** MIXED USE RESIDENTIAL COMPLEX AT HULHUMALE (THE CREEK VIEW)  
**DEVELOPER:** SASe GLUT JV PVT. LTD.  
**CONTRACTOR:** GLUT INVESTMENTS PVT. LTD.  
**LOCATION:** LOT NO: S1-3, LOT: 11445 HULHUMALE', MALDIVES

**PROJECT BREIF:**

The Creek View at Hulhumale Phase-1 is a pristine, spacious condominium project brought to you by the company SASe Glut Joint-venture Private Limited. The development is located at Lot 11445, Kuredhimaa Hingun overseeing the creek separating phase I and phase II of Hulhumale'.

The building comprises 114 apartments with 2 room, 3 room and 4 room units, each carefully designed to ensure the separation of spaces with special attention given to privacy and offer a homely feeling. Each apartment has a mini backyard with access from the kitchen. The kitchens are designed as enclosed spaces separated by masonry and glass partitions.

The apartment units are designed to make the most of natural air and light ventilation with floor to ceiling high windows. These large windows are also placed with an offset from the periphery to prevent direct sun and rain exposure. As many prefer to shape every element of their home environment, carefully choosing their furniture, curtain & paint, we find it best to engage prospective tenants during the interior design process. Those looking to occupy the new home hassle-free have the option to choose from fully fitted, furnished units that come in a different configuration of colour, style & décor.

The access to the residential units is well separated from the commercial area on the ground and the first floor to ensure privacy and safety to tenants. In addition, the entrance lobby is designed with a waiting & meeting area for visitors, limiting visitors' access to apartment floors.

Parking is arranged at the basement, ground and first floor with the basement exclusively for car parking. Amenities such as the pool and playgrounds are at ground level. At the same time, all utility services are located at the service lobby to avoid direct contact with any service team member. A separate service elevator will be allocated for the use of the service team for transporting furniture items and trash bins.

## 1.0 PROJECT PROGRESS REPORT BREIF

- 1.1 All permits and project documentation requirements are submitted and process accordingly.
- 1.2 Drawings and details are submitted and approved.
- 1.3 All land concern and preparation are addressed in coordinated according to the local government requirements.
- 1.4 All necessary activities and preparation are in progress.

## 2.0 CURRENT STATUS

### 2.1 Materials and Equipment's Procurement

#### 2.1.1 Material and Equipment Received

Cement, Sand, Aggregates, Pipes, Blocks, Tiles, Putty, Paint, Wire, U profile, Ceiling material, Aluminium door and windows, Fan, Switches, MCB and Sanitary items

### 2.2 Time Extension has been granted by HDC up to 31<sup>st</sup> JULY 2025

### 2.3 Project Progress Meeting by Urbanco

#### 2.3.1 No meeting

### 2.4 Site Coordination Meeting with Consultants

#### 2.4.1 Date: 28<sup>th</sup> July 24

### 2.5 Site Coordination Meeting with Sase – Glut

2.4.1: 17<sup>th</sup> July 24, 18<sup>th</sup> July 24, 20<sup>th</sup> July 24, 22<sup>nd</sup> July 24, 25<sup>th</sup> July 24 and 31<sup>th</sup> July 24.

### 2.6 Issue for Construction Drawing

#### 2.6.1 Detail drawings

2.6.1.1 Landscaping, Boundary wall, swimming pool Drawings – Are Pending

#### 2.6.2 Architectural drawings

2.6.2.1 Architectural Floor Plans – Partial Received

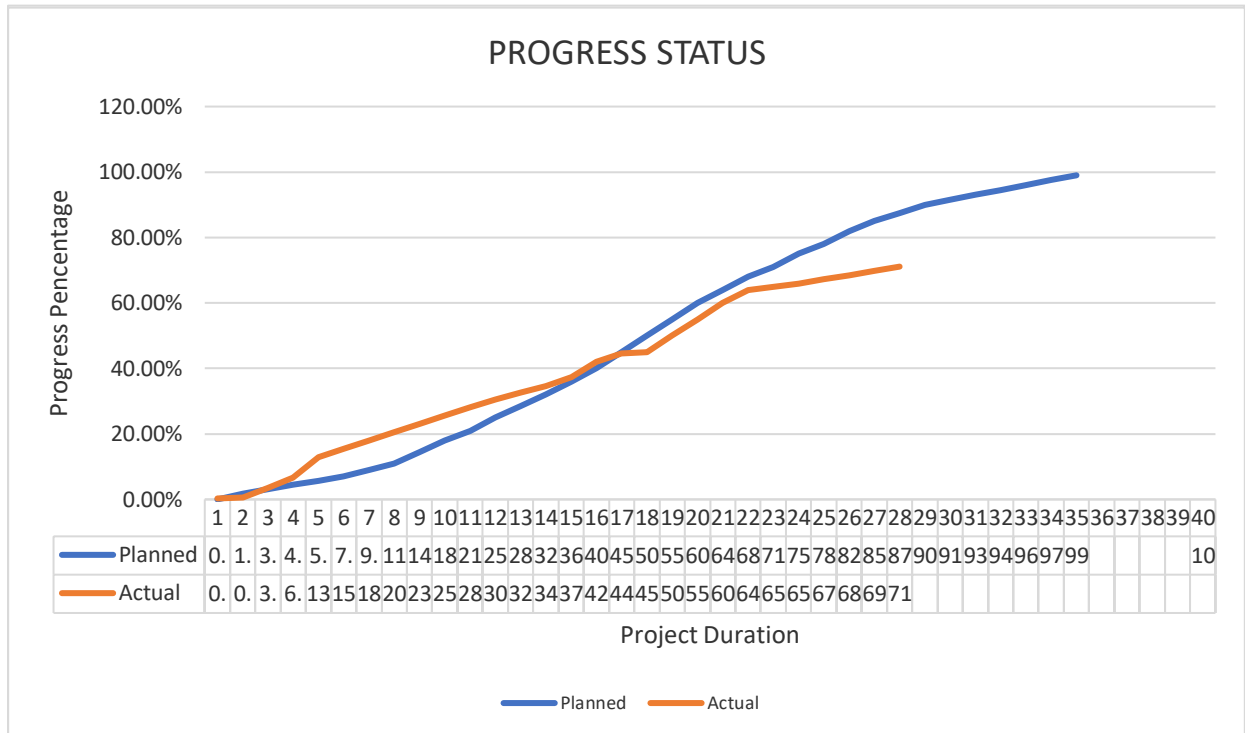
#### 2.6.3 Electrical drawings

2.6.3.1 Electrical Floor Plans – Partial Received

#### 2.6.4 Plumbing drawings

2.6.4.1 Plumbing Floor Plans – Partial Received

### 2.7 Project Status



### 3.0 ONGOING/COMPLETED WORKS

- 3.1 13<sup>th</sup> floor L, M and N apartment block work continuous.
- 3.2 Putty work 2<sup>nd</sup> to terrace floor Door, windows and stair case area.
- 3.3 Elevation E1, E2 external plastering started.
- 3.4 2<sup>nd</sup> to 8<sup>th</sup> floor bathroom wall and floor tile laying completed
- 3.5 False ceiling work 2<sup>nd</sup> to 9<sup>th</sup> continuous
- 3.6 2<sup>nd</sup> to 6<sup>th</sup> floor bathroom wall and floor tile laying completed
- 3.7 Safety net installation and scaffolding internal perimeter area
- 3.8 Fresh water line up to 9<sup>th</sup> floor and common area 6<sup>th</sup> floor completed
- 3.9 Floor wiring 7<sup>th</sup> floor completed; Ceiling wiring 11<sup>th</sup> floor continuous

### 4.0 UPCOMING WORKS FOR NEXT MONTH

- 4.1 Elevation E1 and E2 external plastering will complete
- 4.2 13<sup>th</sup> floor all external and internal block work complete
- 4.3 Screeding work will complete on 4<sup>th</sup>, 5<sup>th</sup> 6<sup>th</sup> floor will complete
- 4.4 8<sup>th</sup> and 9<sup>th</sup> floor toilet floor tile and wall tile work will complete
- 4.5 Up to 9<sup>th</sup> floor floor wiring and 12<sup>th</sup> floor ceiling wiring will complete
- 4.6 Plumbing work up to 11<sup>th</sup> floor will complete
- 4.7 Water proofing up to 11<sup>th</sup> floor will complete
- 4.8 Penthouse roofing sheet laying will complete
- 4.9 Safety net installation and internal perimeter scaffolding installation

## 5.0 ACCIDENT REPORT

5.1 No accident was reported

## 6.0 CHALLENGES FACED DURING CONSTRUCTION / IMPLEMENTATION

6.1 Weather disruption due to heavy wind and rain (see weather chart–9.0)

## 7.0 INSTRUCTION GIVEN ON SITE

7.1 Minutes of meeting dated: 6<sup>th</sup> July 2024, 13<sup>th</sup> July 2024, 20<sup>th</sup> July 2024 and 27<sup>th</sup> July 2024.

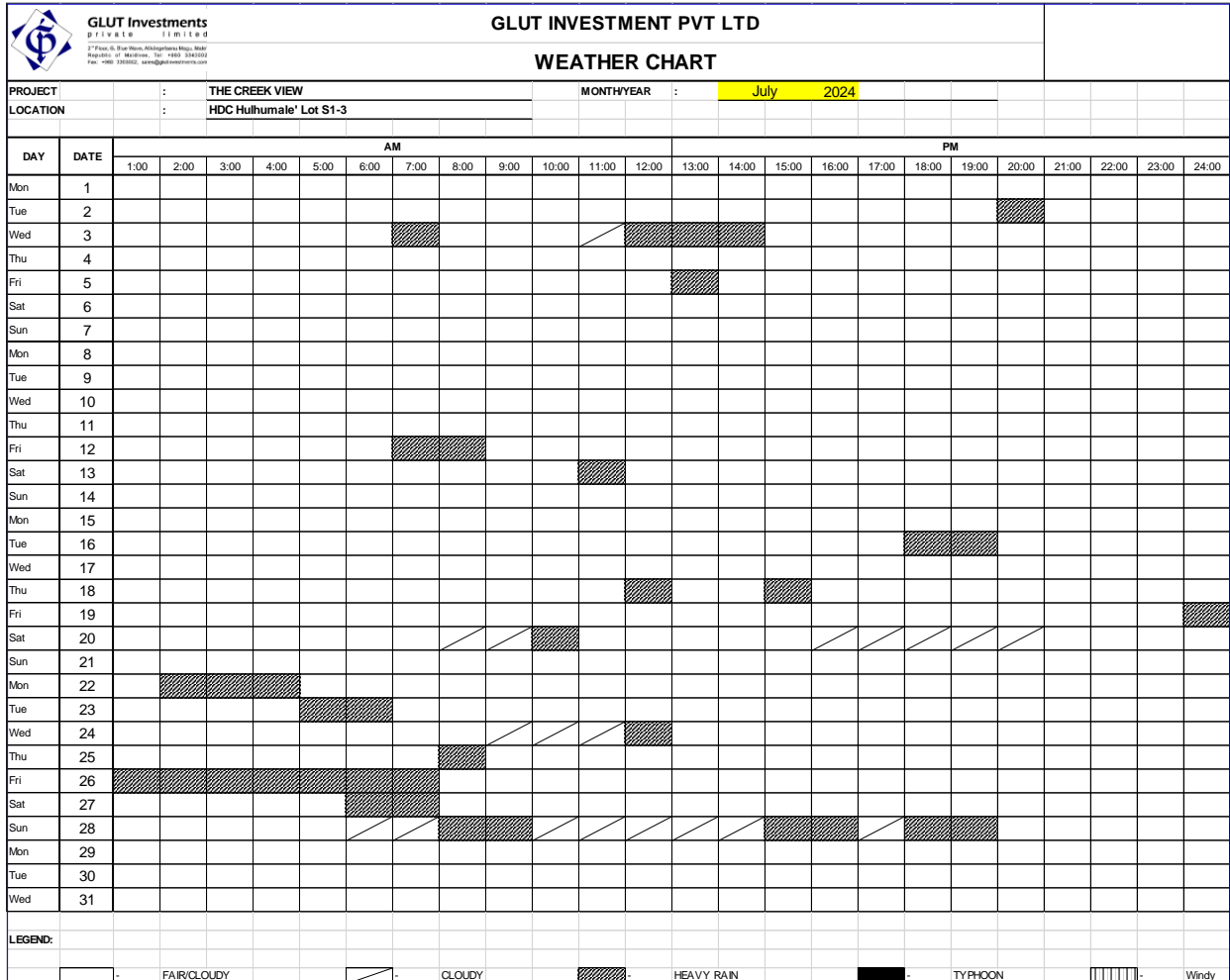
## 8.0 DOCUMENTATION OF APPROVED MATERIALS

8.1 Material submittal Report

8.1.1 No Report

## 9.0 WEATHER CHART

9.1 July 2024



<b>2022</b>		
<b>Months</b>	<b>Rainy Days</b>	<b>Days to Claim</b>
April	11	11
May	19	19
June	16	16
July	19	19
August	14	14
September	14	14
October	17	17
November	11	11
December	16	16
<b>2023</b>		
January	7	7
February	1	1
March	9	9
April	10	10
May	10	10
June	13	13
July	9	9
August	12	12
September	12	12
October	20	20
November	20	20
December	19	19
<b>2024</b>		
January	5	5
February	8	8
March	4	4
April	8	8
May	20	20
June	9	9
July	16	16

**10.0 SITE PROGRESS PHOTO**

10.1 July 2024 Site Photos



C D air well external wall plastering



Roof truss erection



13<sup>th</sup> floor block work



Terrace floor common area plastering





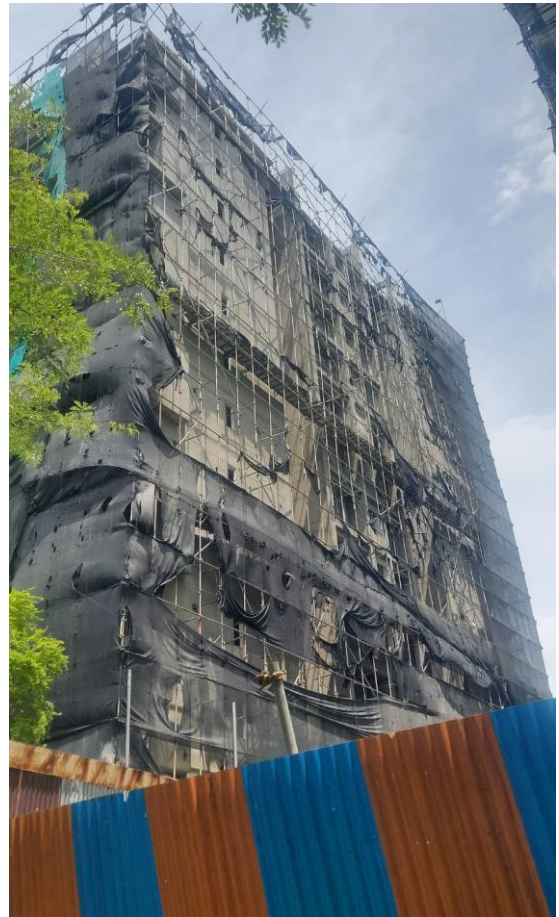
10<sup>th</sup> floor plumbing work continuous



2<sup>nd</sup> to 12<sup>th</sup> floor cable tray laying



8<sup>th</sup> floor tiling work



2<sup>nd</sup> to 13<sup>th</sup> floor E4 ex plastering work



Safety Net installation



Safety Net Installation



4<sup>th</sup> floor screeding work



7<sup>th</sup> floor ceiling work



4<sup>th</sup> floor ceiling work



8<sup>th</sup> floor toilet water proofing



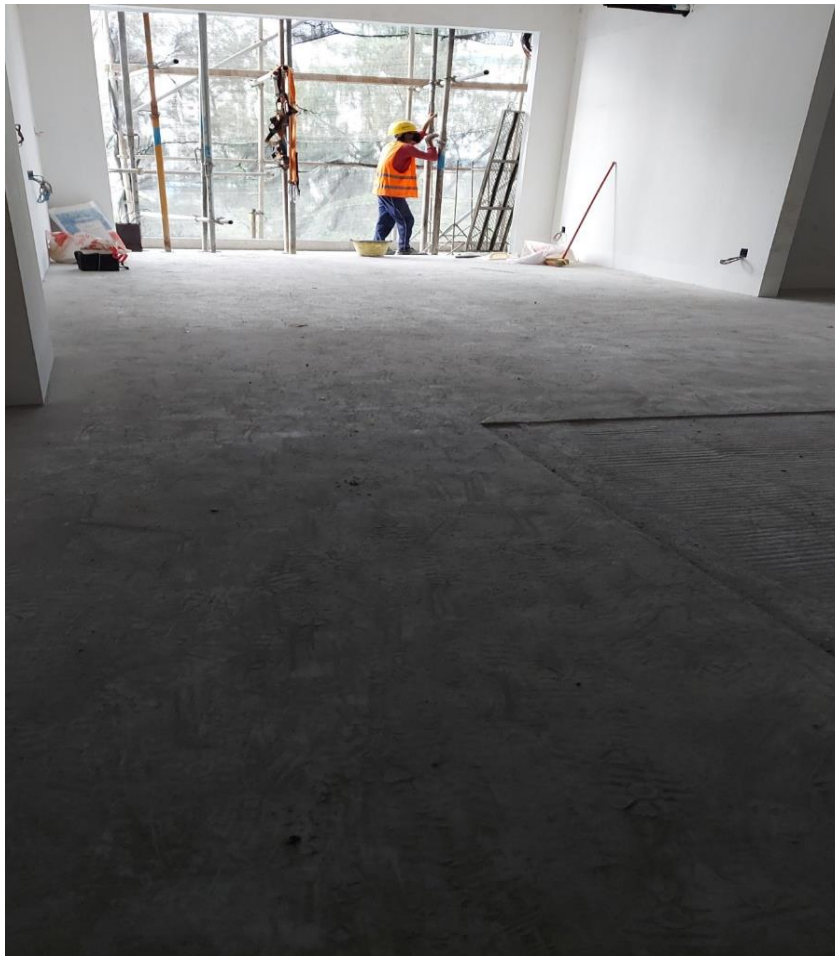
7<sup>th</sup> floor floor wiring



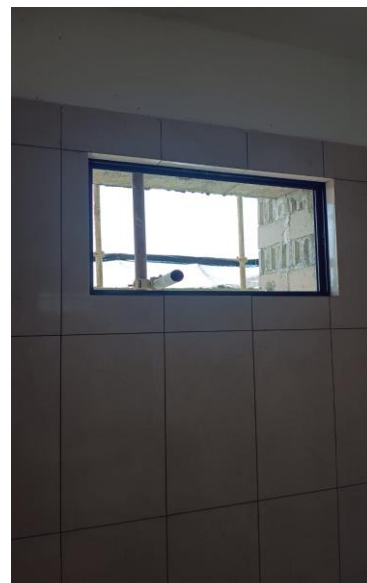
Common area ceiling work



5<sup>th</sup> floor fresh water line



4<sup>th</sup> floor screeding work






Aluminium Door and Window frame fixing

PREPARED AND SUBMITTED BY GLUT INVESTMENTS PVT. LTD.

**Prepared By:**

  
Anandaraj  
Civil Engineer (Glut)

**Checked By:**

  
Mohamed Shamin  
Project Consultant