

PROJECT PROGRESS REPORT

JULY 2023



DEVELOPER:



SAS e GLUT JV Pvt Ltd

CONTRACTOR:



GLUT Investments
private limited

PROJECT TITLE: MIXED USE RESIDENTIAL COMPLEX AT HULHUMALE (THE CREEK VIEW)
DEVELOPER: SASe GLUT JV PVT. LTD.
CONTRACTOR: GLUT INVESTMENTS PVT. LTD.
LOCATION: LOT NO: S1-3, LOT: 11445 HULHUMALE', MALDIVES

PROJECT BREIF:

The Creek View at Hulhumale Phase-1 is a pristine, spacious condominium project brought to you by the company SASe Glut Joint-venture Private Limited. The development is located at Lot 11445, Kuredhimaa Hingun overseeing the creek separating phase I and phase II of Hulhumale'.

The building comprises 114 apartments with 2 room, 3 room and 4 room units, each carefully designed to ensure the separation of spaces with special attention given to privacy and offer a homely feeling. Each apartment has a mini backyard with access from the kitchen. The kitchens are designed as enclosed spaces separated by masonry and glass partitions.

The apartment units are designed to make the most of natural air and light ventilation with floor to ceiling high windows. These large windows are also placed with an offset from the periphery to prevent direct sun and rain exposure. As many prefer to shape every element of their home environment, carefully choosing their furniture, curtain & paint, we find it best to engage prospective tenants during the interior design process. Those looking to occupy the new home hassle-free have the option to choose from fully fitted, furnished units that come in a different configuration of colour, style & décor.

The access to the residential units is well separated from the commercial area on the ground and the first floor to ensure privacy and safety to tenants. In addition, the entrance lobby is designed with a waiting & meeting area for visitors, limiting visitors' access to apartment floors.

Parking is arranged at the basement, ground and first floor with the basement exclusively for car parking. Amenities such as the pool and playgrounds are at ground level. At the same time, all utility services are located at the service lobby to avoid direct contact with any service team member. A separate service elevator will be allocated for the use of the service team for transporting furniture items and trash bins.

1.0 PROJECT PROGRESS REPORT BREIF

- 1.1 All permits and project documentation requirements are submitted and process accordingly.
- 1.2 Drawings and details are submitted and approved.
- 1.3 All land concern and preparation are addressed in coordinated according to the local government requirements.
- 1.4 All necessary activities and preparation are in progress.

2.0 CURRENT STATUS

2.1 Materials and Equipment's Procurement

2.1.1 Material and Equipment Received

2.1.1.1 Steel Bars, Cement, Sand, Aggregates & Blocks

2.2 Project Progress Meeting by Urbanco

2.2.1 Date: No Meeting was conducted

2.3 Site Coordination Meeting with Consultants

2.3.1 Date: No Meeting was conducted

2.4 Site Coordination Meeting with Sase - Glut

2.4.1 Date: 31 July 2023

2.5 Issue for Construction Drawing

2.5.1 Structural drawings

2.5.1.1 Structural Floor Plans – Partial Received

2.5.2 Architectural drawings

2.5.2.1 Architectural Floor Plans – Partial Received

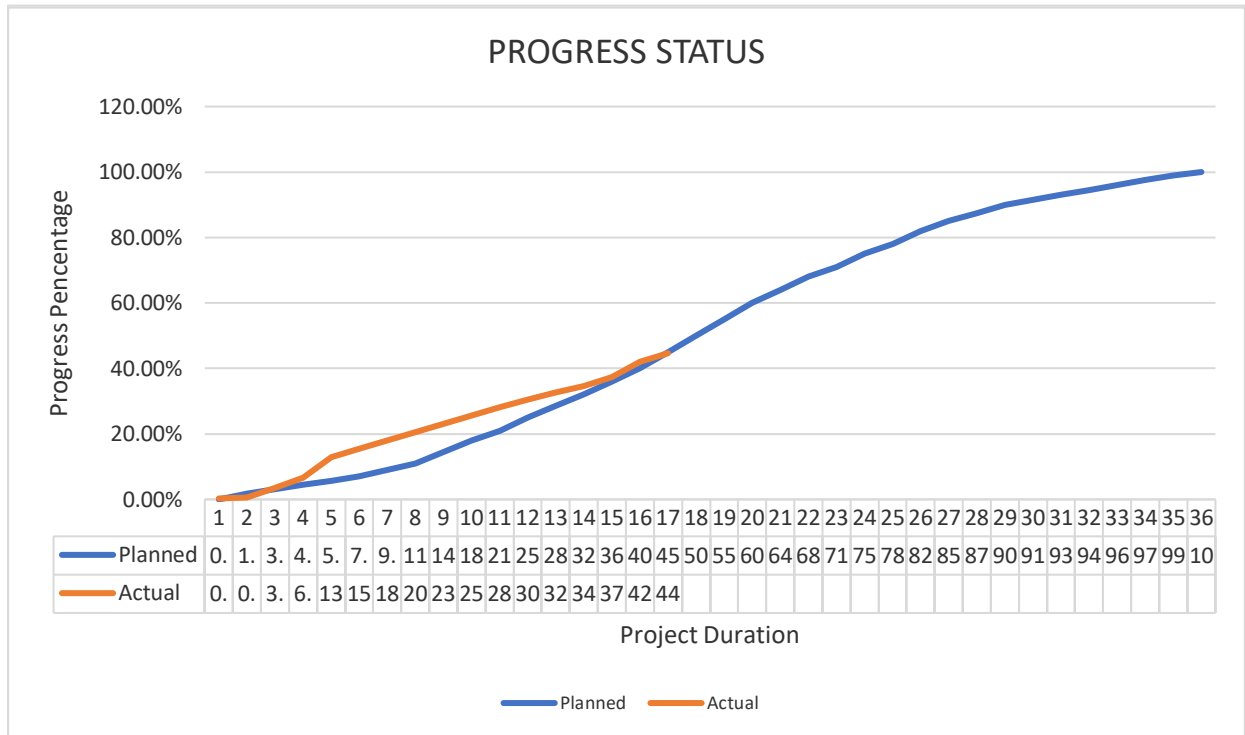
2.5.3 Electrical drawings

2.5.3.1 Electrical Floor Plans – Partial Received

2.5.4 Electrical drawings

2.5.4.1 Plumbing Floor Plans – Partial Received

2.6 Project Status



3.0 ONGOING/COMPLETED WORKS

- 3.1 Tenth floor beam and slab formworks fabrication and installation
- 3.2 Tenth floor beam and slab reinforcement fabrication and installation
- 3.3 Tenth floor plumbing and electrical sleeve installation
- 3.4 Concrete casting for Tenth floor beam and slab (11th slab)
- 3.5 Tenth floor columns, lift wall and stair reinforcement fabrication and installation
- 3.6 Tenth floor columns, lift wall and stair formworks fabrication and installation
- 3.7 Concrete casting for Tenth floor columns, lift wall and stair
- 3.8 Eleventh floor beam and slab formworks fabrication and installation
- 3.9 Eleventh floor beam and slab reinforcement fabrication and installation
- 3.10 Eleventh floor plumbing and electrical sleeve installation
- 3.11 Concrete casting for Eleventh floor beam and slab (12th slab)
- 3.12 Eighth floor slab soffit de-shuttering works
- 3.13 Third and Fourth floor masonry block laying
- 3.14 Fifth floor masonry preparation and block laying
- 3.15 Sixth floor masonry preparation and block laying
- 3.16 Seventh floor concrete kicker preparation
- 3.17 Third floor plastering preparation

3.18 Safety net installation and scaffolding internal perimeter

4.0 UPCOMING WORKS FOR NEXT MONTH

- 4.1 Eleventh floor columns, lift wall and stair reinforcement fabrication and installation
- 4.2 Eleventh floor columns, lift wall and stair formworks fabrication and installation
- 4.3 Concrete casting for eleventh floor columns, lift wall and stair
- 4.4 Twelfth floor beam and slab formworks fabrication and installation
- 4.5 Twelfth floor beam and slab reinforcement fabrication and installation
- 4.6 Concrete casting for Twelfth floor beam and slab (13th slab)
- 4.7 Twelfth floor columns, lift wall and stair reinforcement fabrication and installation
- 4.8 Twelfth floor columns, lift wall and stair formworks fabrication and installation
- 4.9 Concrete casting for Twelfth floor columns, lift wall and stair
- 4.10 Ninth floor slab soffit de-shuttering work
- 4.11 Second and Third floor plastering work
- 4.12 Second, Third, Fourth, Fifth and Sixth floor masonry works preparation and block laying
- 4.13 Seventh and Eighth floor masonry works preparation and block laying
- 4.14 Third floor plastering and Fourth plastering preparation
- 4.15 Safety net installation and internal perimeter scaffolding installation

5.0 ACCIDENT REPORT

- 5.1 No accident was reported

6.0 CHALLENGES FACED DURING CONSTRUCTION / IMPLEMENTATION

- 6.1 Weather disturbance due to isolated heavy rains (weather chart)

7.0 INSTRUCTION GIVEN ON SITE

7.1 Minutes of meeting dated: 31 July 2023

8.0 DOCUMENTATION OF APPROVED MATERIALS

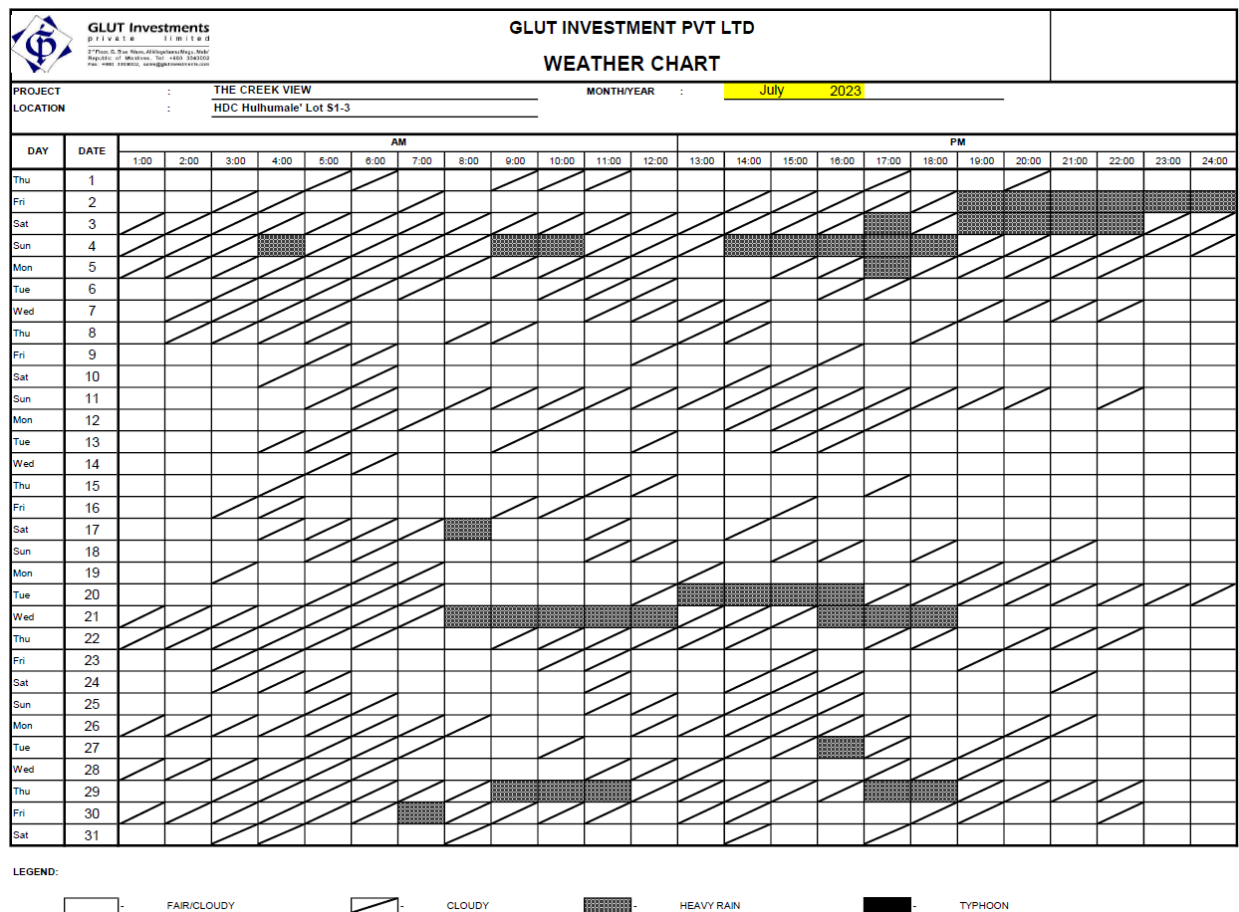
8.1 Cube Test Report

8.1.1 Tenth Floor Slab (11th Slab)

8.1.2 Tenth Floor Columns and Lift wall

9.0 WEATHER CHART

9.1 July 2023



2022		
Months	Rainy Days	Days to Claim
March	5	5
April	11	11
May	19	19
June	16	16
July	19	19
August	14	14
September	14	14
October	17	17
November	11	11
December	16	16
2023		
January	7	7
February	1	1
March	9	9
April	10	10
May	10	10
June	13	13
July	9	9

10.0 SITE PROGRESS PHOTO

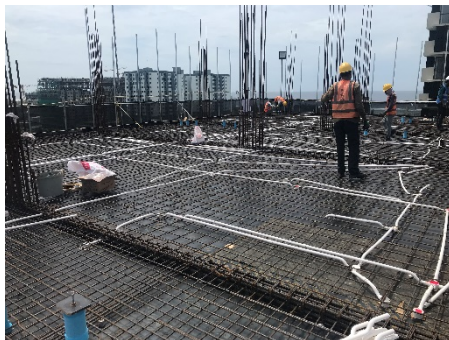
10.1 July 2023 Site Photos



10th Floor Beam & Slab Reinf.



10th Floor Beam & Slab Formworks



10th Floor Electrical & Plumbing Sleeve



10th Floor Slab Concrete Casting



10th Floor Column Reinforcement



10th Floor Column Formworks



10th Floor Columns Concrete Casting



11th Floor Beam & Slab Formworks



11th Floor Beam Reinforcement



11th Electrical & Plumbing Sleeve



11th Floor Slab Reinforcement



11th Floor Slab Concrete Casting



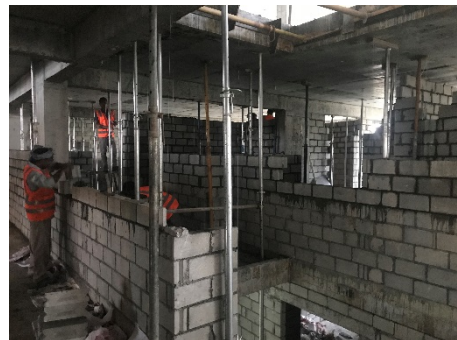
3rd Floor Electrical Wall Chasing



4th Floor Blocks Laying



5th Floor Blocks Laying



6th Floor Blocks Laying



7th Floor Wall Kicker Layout



Safety Net Installation

PREPARED AND SUBMITTED BY GLUT INVESTMENTS PVT. LTD.

Prepared By:

A handwritten signature in blue ink that reads "Rodel Rosales".

Rodel Rosales
Civil Engineer (Glut)

Checked By:

Ali Riyaz
Project Consultant