

# PROJECT PROGRESS REPORT

MAY 2023



**DEVELOPER:**



SAS e GLUT JV Pvt Ltd

**CONTRACTOR:**



**GLUT Investments**  
private limited

**PROJECT TITLE:** MIXED USE RESIDENTIAL COMPLEX AT HULHUMALE (THE CREEK VIEW)  
**DEVELOPER:** SASe GLUT JV PVT. LTD.  
**CONTRACTOR:** GLUT INVESTMENTS PVT. LTD.  
**LOCATION:** LOT NO: S1-3, LOT: 11445 HULHUMALE', MALDIVES

**PROJECT BREIF:**

The Creek View at Hulhumale Phase-1 is a pristine, spacious condominium project brought to you by the company SASe Glut Joint-venture Private Limited. The development is located at Lot 11445, Kuredhimaa Hingun overseeing the creek separating phase I and phase II of Hulhumale'.

The building comprises 114 apartments with 2 room, 3 room and 4 room units, each carefully designed to ensure the separation of spaces with special attention given to privacy and offer a homely feeling. Each apartment has a mini backyard with access from the kitchen. The kitchens are designed as enclosed spaces separated by masonry and glass partitions.

The apartment units are designed to make the most of natural air and light ventilation with floor to ceiling high windows. These large windows are also placed with an offset from the periphery to prevent direct sun and rain exposure. As many prefer to shape every element of their home environment, carefully choosing their furniture, curtain & paint, we find it best to engage prospective tenants during the interior design process. Those looking to occupy the new home hassle-free have the option to choose from fully fitted, furnished units that come in a different configuration of colour, style & décor.

The access to the residential units is well separated from the commercial area on the ground and the first floor to ensure privacy and safety to tenants. In addition, the entrance lobby is designed with a waiting & meeting area for visitors, limiting visitors' access to apartment floors.

Parking is arranged at the basement, ground and first floor with the basement exclusively for car parking. Amenities such as the pool and playgrounds are at ground level. At the same time, all utility services are located at the service lobby to avoid direct contact with any service team member. A separate service elevator will be allocated for the use of the service team for transporting furniture items and trash bins.

## 1.0 PROJECT PROGRESS REPORT BREIF

- 1.1 All permits and project documentation requirements are submitted and process accordingly.
- 1.2 Drawings and details are submitted and approved.
- 1.3 All land concern and preparation are addressed in coordinated according to the local government requirements.
- 1.4 All necessary activities and preparation are in progress.

## 2.0 CURRENT STATUS

### 2.1 Materials and Equipment's Procurement

#### 2.1.1 Material and Equipment Received

##### 2.1.1.1 N/A

### 2.2 Project Progress Meeting by Urbanco

#### 2.2.1 Date: No Meeting was conducted

### 2.3 Site Coordination Meeting with Consultants

#### 2.3.1 Date: 17 May 2023

### 2.4 Site Coordination Meeting with Sase - Glut

#### 2.4.1 Date: 23 May 2023

### 2.5 Issue for Construction Drawing

#### 2.5.1 Structural drawings

##### 2.5.1.1 Structural Floor Plans – Partial Received

#### 2.5.2 Architectural drawings

##### 2.5.2.1 Architectural Floor Plans – Partial Received

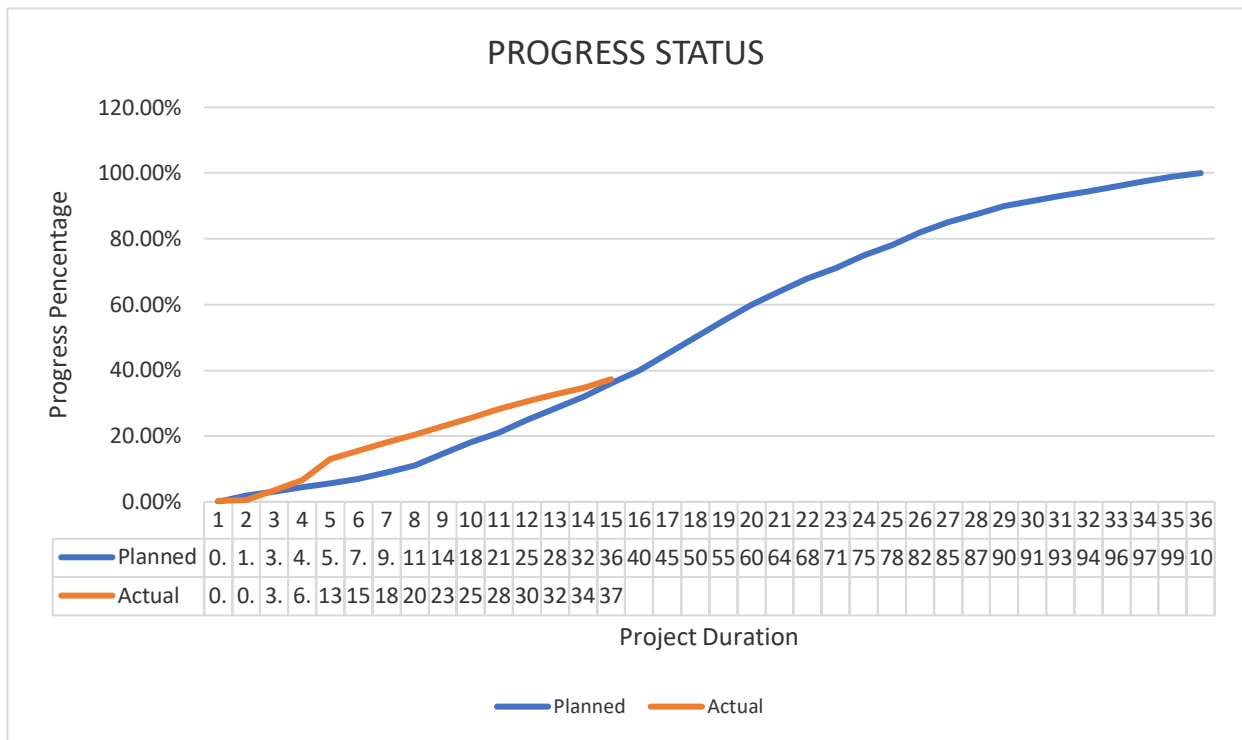
#### 2.5.3 Electrical drawings

##### 2.5.3.1 Electrical Floor Plans – Partial Received

#### 2.5.3 Plumbing drawings

##### 2.4.3.1 Plumbing Floor Plans – Partial Received

### 2.6 Project Status



### 3.0 ONGOING/COMPLETED WORKS

- 3.1 Eighth floor beam and slab reinforcement fabrication and installation
- 3.2 Eighth floor plumbing and electrical sleeve installation
- 3.3 Concrete casting for Eighth floor beam and slab (9th slab)
- 3.4 Eighth floor columns, lift wall and stair reinforcement fabrication and installation
- 3.5 Eighth floor columns, lift wall and stair formworks fabrication and installation
- 3.6 Concrete casting for eighth floor columns, lift wall and stair
- 3.7 Ninth floor beam and slab formworks fabrication and installation
- 3.8 Ninth floor beam reinforcement fabrication and installation
- 3.9 Ninth floor plumbing and electrical sleeve installation
- 3.10 Sixth floor slab soffit de-shuttering works
- 3.11 Basement ramp slab reinforcement fabrication and installation
- 3.12 Basement ramp concrete casting
- 3.13 Third and Fourth floor masonry preparation and block laying
- 3.14 Fifth floor masonry preparation and block laying
- 3.15 Safety net installation and scaffolding internal perimeter

#### **4.0 UPCOMING WORKS FOR NEXT MONTH**

- 4.1 Ninth floor beam and slab formworks fabrication and installation
- 4.2 Ninth floor beam and slab reinforcement fabrication and installation
- 4.3 Ninth floor plumbing and electrical sleeve installation
- 4.4 Concrete casting for Ninth floor beam and slab (10th slab)
- 4.5 Ninth floor columns, lift wall and stair reinforcement fabrication and installation
- 4.6 Ninth floor columns, lift wall and stair formworks fabrication and installation
- 4.7 Concrete casting for ninth floor columns, lift wall and stair
- 4.8 Seventh floor slab soffit de-shuttering work
- 4.9 Second and Third floor plastering work
- 4.10 Sixth floor masonry works preparation and block laying
- 4.11 Seventh floor masonry works preparation and block laying
- 4.12 Safety net installation and internal perimeter scaffold

#### **5.0 ACCIDENT REPORT**

- 5.1 Number of accidents reported – 1
- 5.2 Number of first aid cases - 2

#### **6.0 CHALLENGES FACED DURING CONSTRUCTION / IMPLEMENTATION**

- 6.1 Weather disturbance due to isolated heavy rains (weather chart)

#### **7.0 INSTRUCTION GIVEN ON SITE**

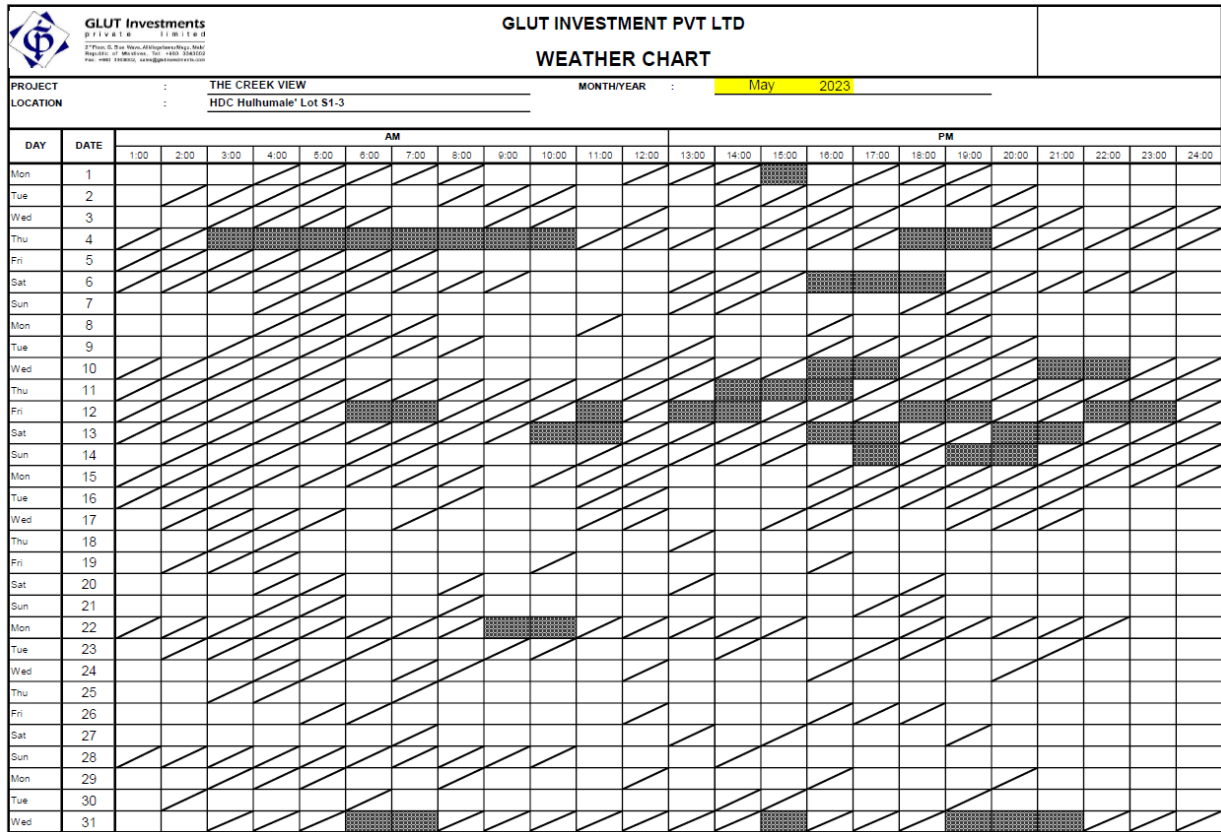
- 7.1 Minutes of meeting dated: 17 May 2023

#### **8.0 DOCUMENTATION OF APPROVED MATERIALS**

- 8.1 Cube Test Report
  - 8.1.1 Eighth Floor Slab (9<sup>th</sup> Slab)
  - 8.1.2 Eighth Floor Columns and Lift wall

## 9.0 WEATHER CHART

9.1 May 2023



LEGEND:



2022		
Months	Rainy Days	Days to Claim
March	5	5
April	11	11
May	19	19
June	16	16
July	19	19
August	14	14
September	14	14
October	17	17
November	11	11
December	16	16
2023		
January	7	7
February	1	1
March	9	9
April	10	10
May	10	10

**10.0 SITE PROGRESS PHOTO**

10.1 May 2023 Site Photos



8th Floor Beam & Slab Reinforcement



8th Floor Plumbing & Electrical Sleeve



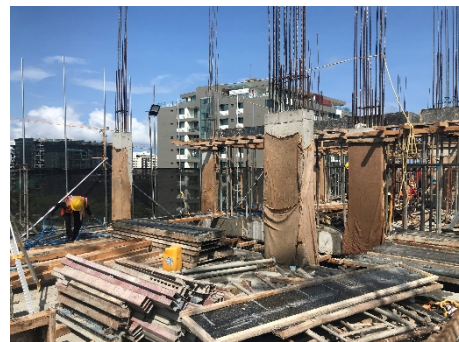
8th Floor Slab Concrete Casting



8th Floor Column Reinforcement



8th Floor Column Formworks



8th Floor Column Concrete Casting



9th Floor Beam & Slab Formworks



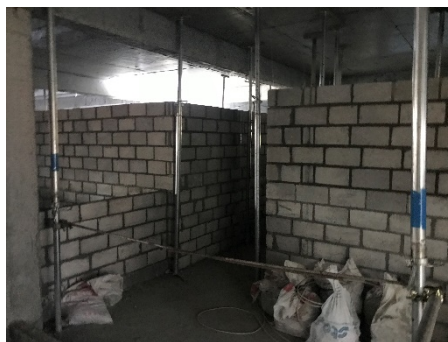
9th Floor Beam Reinforcement



Basement Ramp Reinforcement



Basement Ramp Concrete Casting



3rd Floor Blocks Laying



4th Floor Blocks Laying



5th Floor Wall Kicker Layout



Safety Net Installation

PREPARED AND SUBMITTED BY GLUT INVESTMENTS PVT. LTD.

**Prepared By:**

A blue ink signature of Rodel Rosales.

Rodel Rosales  
Civil Engineer (Glut)

**Checked By:**

A blue ink signature of Ali Riyaz.

Ali Riyaz  
Project Consultant