

REPORT NO: CRVW S1-3/2023/4

# PROJECT PROGRESS REPORT

APRIL 2023



**DEVELOPER:**



SAS e GLUT JV Pvt Ltd

**CONTRACTOR:**



**GLUT Investments**  
private limited

**PROJECT TITLE:** MIXED USE RESIDENTIAL COMPLEX AT HULHUMALE (THE CREEK VIEW)  
**DEVELOPER:** SASe GLUT JV PVT. LTD.  
**CONTRACTOR:** GLUT INVESTMENTS PVT. LTD.  
**LOCATION:** LOT NO: S1-3, LOT: 11445 HULHUMALE', MALDIVES

**PROJECT BREIF:**

The Creek View at Hulhumale Phase-1 is a pristine, spacious condominium project brought to you by the company SASe Glut Joint-venture Private Limited. The development is located at Lot 11445, Kuredhimaa Hingun overseeing the creek separating phase I and phase II of Hulhumale'.

The building comprises 114 apartments with 2 room, 3 room and 4 room units, each carefully designed to ensure the separation of spaces with special attention given to privacy and offer a homely feeling. Each apartment has a mini backyard with access from the kitchen. The kitchens are designed as enclosed spaces separated by masonry and glass partitions.

The apartment units are designed to make the most of natural air and light ventilation with floor to ceiling high windows. These large windows are also placed with an offset from the periphery to prevent direct sun and rain exposure. As many prefer to shape every element of their home environment, carefully choosing their furniture, curtain & paint, we find it best to engage prospective tenants during the interior design process. Those looking to occupy the new home hassle-free have the option to choose from fully fitted, furnished units that come in a different configuration of colour, style & décor.

The access to the residential units is well separated from the commercial area on the ground and the first floor to ensure privacy and safety to tenants. In addition, the entrance lobby is designed with a waiting & meeting area for visitors, limiting visitors' access to apartment floors.

Parking is arranged at the basement, ground and first floor with the basement exclusively for car parking. Amenities such as the pool and playgrounds are at ground level. At the same time, all utility services are located at the service lobby to avoid direct contact with any service team member. A separate service elevator will be allocated for the use of the service team for transporting furniture items and trash bins.

## 1.0 PROJECT PROGRESS REPORT BREIF

- 1.1 All permits and project documentation requirements are submitted and process accordingly.
- 1.2 Drawings and details are submitted and approved.
- 1.3 All land concern and preparation are addressed in coordinated according to the local government requirements.
- 1.4 All necessary activities and preparation are in progress.

## 2.0 CURRENT STATUS

### 2.1 Materials and Equipment's Procurement

#### 2.1.1 Material and Equipment Received

##### 2.1.1.1 N/A

### 2.2 Project Progress Meeting by HDC

#### 2.2.1 Date: No Meeting was conducted

### 2.3 Site Coordination Meeting with Consultants

#### 2.3.1 Date: No Meeting was conducted

### 2.4 Issue for Construction Drawing

#### 2.4.1 Structural drawings

##### 2.4.1.1 Structural Floor Plans – Partial Received

#### 2.4.2 Architectural drawings

##### 2.4.2.1 Architectural Floor Plans – Partial Received

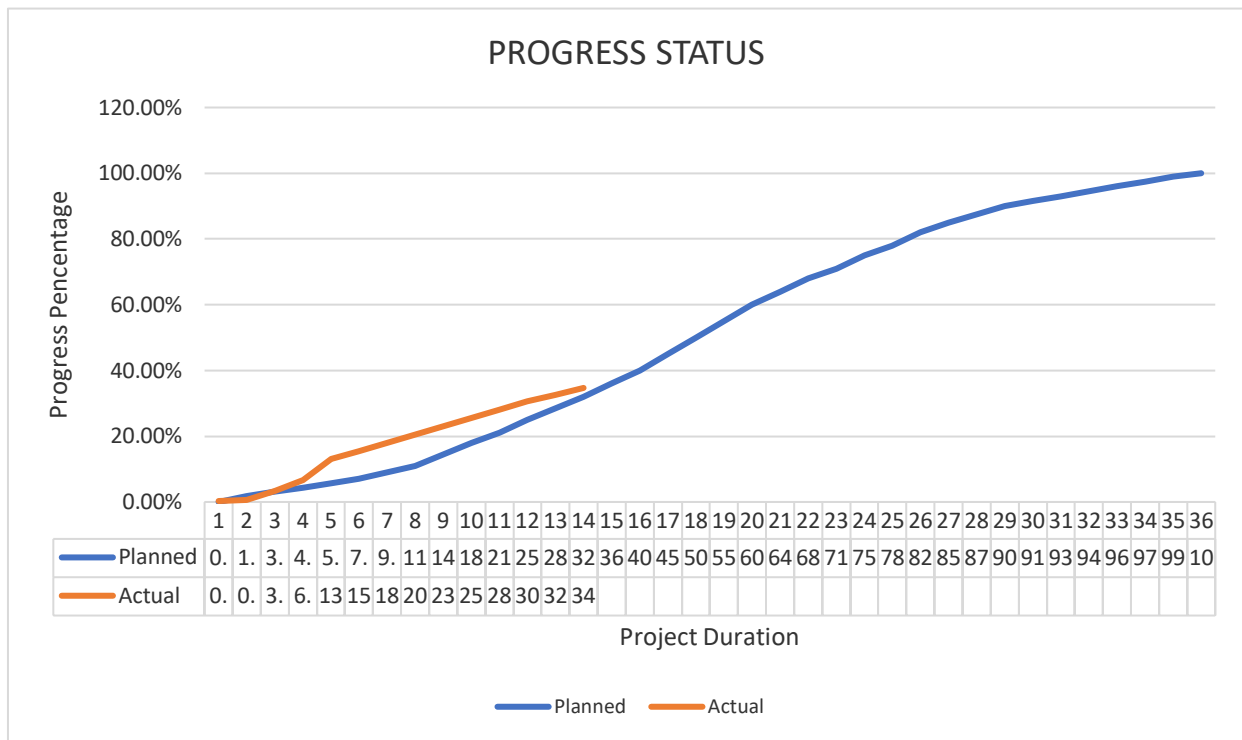
#### 2.4.3 Electrical drawings

##### 2.4.3.1 Electrical Floor Plans – Partial Received

#### 2.4.3 Plumbing drawings

##### 2.4.3.1 Plumbing Floor Plans – Partial Received

### 2.5 Project Status



### 3.0 ONGOING/COMPLETED WORKS

- 3.1 Seventh floor beam and slab formworks fabrication and installation
- 3.2 Seventh floor beam and slab reinforcement fabrication and installation
- 3.3 Seventh floor plumbing and electrical sleeve installation
- 3.4 Concrete casting for Seventh floor beam and slab (8th slab)
- 3.5 Seventh floor columns, lift wall and stair reinforcement fabrication and installation
- 3.6 Seventh floor columns, lift wall and stair formworks fabrication and installation
- 3.7 Concrete casting for seventh floor columns, lift wall and stair
- 3.8 Eighth floor beam and slab formworks fabrication and installation
- 3.9 Eighth floor beam reinforcement fabrication and installation
- 3.10 Eighth floor plumbing and electrical sleeve installation
- 3.11 Fifth floor slab de-shuttering works
- 3.12 Second floor masonry preparation and block laying
- 3.13 Third floor masonry preparation and block laying
- 3.14 Safety net installation and scaffolding internal perimeter

#### 4.0 UPCOMING WORKS FOR NEXT MONTH

- 4.1 Eighth floor beam and slab reinforcement fabrication and installation
- 4.2 Eighth floor plumbing and electrical sleeve installation
- 4.3 Concrete casting for Eighth floor beam and slab (9th slab)
- 4.4 Eighth floor columns, lift wall and stair reinforcement fabrication and installation
- 4.5 Eighth floor columns, lift wall and stair formworks fabrication and installation
- 4.6 Concrete casting for eighth floor columns, lift wall and stair
- 4.7 Basement ramp slab reinforcement fabrication and installation
- 4.8 Sixth floor de-shuttering work
- 4.9 Second floor masonry block laying and plastering work
- 4.10 Third floor masonry works preparation and block laying
- 4.11 Safety net installation and internal perimeter scaffold

#### 5.0 ACCIDENT REPORT

- 5.1 Number of accidents reported – 2
- 5.2 Number of first aid cases - 3

#### 6.0 CHALLENGES FACED DURING CONSTRUCTION / IMPLEMENTATION

- 6.1 Weather disturbance due to isolated heavy rains (weather chart)
- 6.2 Reduced working hours (During Ramadan month)

#### 7.0 INSTRUCTION GIVEN ON SITE

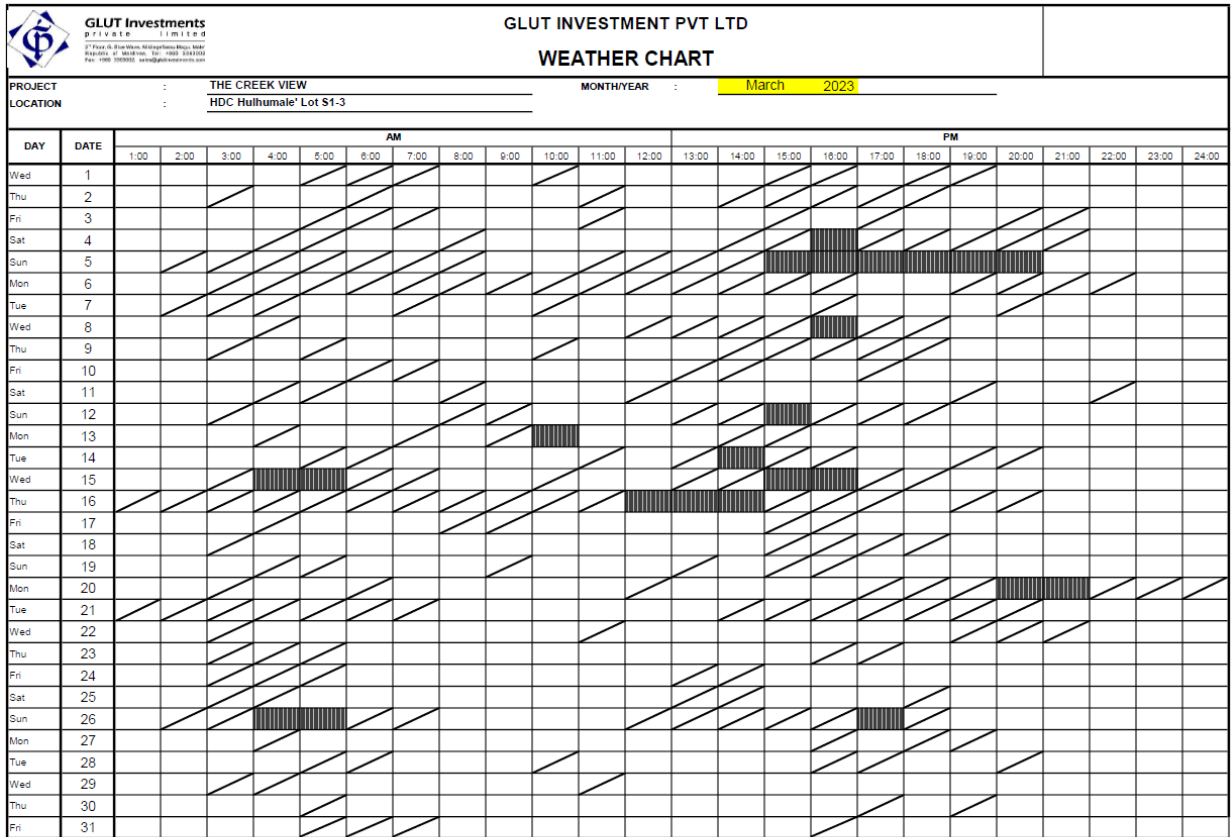
- 7.1 N/A

#### 8.0 DOCUMENTATION OF APPROVED MATERIALS

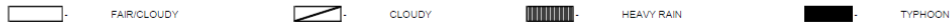
- 8.1 Cube Test Report
  - 8.1.1 Sixth Floor Columns and Lift wall
  - 8.1.2 Seventh Floor Slab (8<sup>th</sup> Slab)
  - 8.1.3 Seventh Floor Columns and Lift wall

## 9.0 WEATHER CHART

9.1 April 2023



LEGEND:



2022		
Months	Rainy Days	Days to Claim
March	5	5
April	11	11
May	19	19
June	16	16
July	19	19
August	14	14
September	14	14
October	17	17
November	11	11
December	16	16
2023		
January	7	7
February	1	1
March	9	9
April	10	10



**10.0 SITE PROGRESS PHOTO**

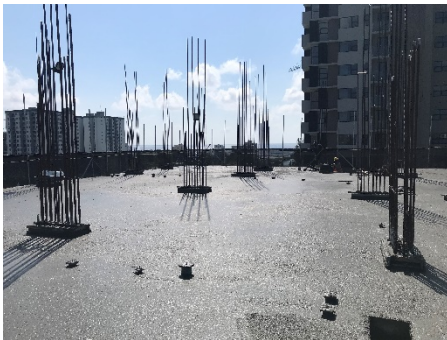
10.1 April 2023 Site Photos



7th Floor Beam & Slab Formworks



7th Floor Beam & Slab Reinforcement



7th Floor Slab Concrete Casting



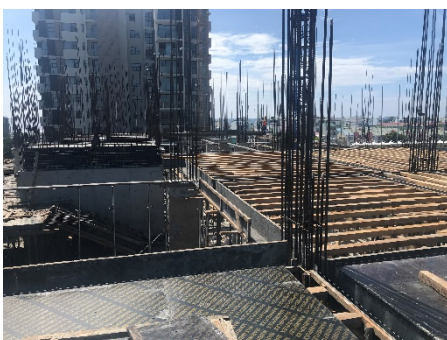
7th Floor Column Reinforcement



7th Floor Column Formworks



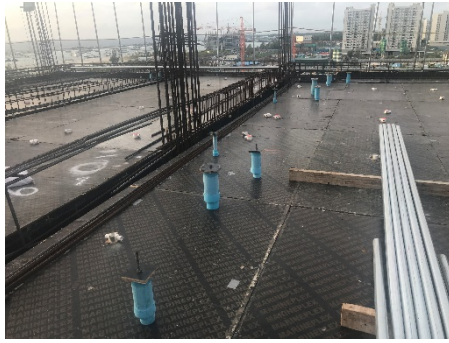
7th Floor Column Concrete Casting



8th Floor Beam & Slab Formworks



8th Floor Beam Reinforcement



8<sup>th</sup> Floor Plumbing Sleeve Installation



2nd Floor Blocks Laying



3rd Floor Wall Kicker Layout



Safety Net Installation

PREPARED AND SUBMITTED BY GLUT INVESTMENTS PVT. LTD.

**Prepared By:**

A blue ink signature of Rodel Rosales.

Rodel Rosales  
Civil Engineer (Glut)

**Checked By:**

A blue ink signature of Ali Riyaz.

Ali Riyaz  
Project Consultant