

# PROJECT PROGRESS REPORT

MARCH 2023



**DEVELOPER:**



SAS e GLUT JV Pvt Ltd

**CONTRACTOR:**



**GLUT Investments**  
private limited

**PROJECT TITLE:** MIXED USE RESIDENTIAL COMPLEX AT HULHUMALE (THE CREEK VIEW)  
**DEVELOPER:** SASe GLUT JV PVT. LTD.  
**CONTRACTOR:** GLUT INVESTMENTS PVT. LTD.  
**LOCATION:** LOT NO: S1-3, LOT: 11445 HULHUMALE', MALDIVES

**PROJECT BREIF:**

The Creek View at Hulhumale Phase-1 is a pristine, spacious condominium project brought to you by the company SASe Glut Joint-venture Private Limited. The development is located at Lot 11445, Kuredhimaa Hingun overseeing the creek separating phase I and phase II of Hulhumale'.

The building comprises 114 apartments with 2 room, 3 room and 4 room units, each carefully designed to ensure the separation of spaces with special attention given to privacy and offer a homely feeling. Each apartment has a mini backyard with access from the kitchen. The kitchens are designed as enclosed spaces separated by masonry and glass partitions.

The apartment units are designed to make the most of natural air and light ventilation with floor to ceiling high windows. These large windows are also placed with an offset from the periphery to prevent direct sun and rain exposure. As many prefer to shape every element of their home environment, carefully choosing their furniture, curtain & paint, we find it best to engage prospective tenants during the interior design process. Those looking to occupy the new home hassle-free have the option to choose from fully fitted, furnished units that come in a different configuration of colour, style & décor.

The access to the residential units is well separated from the commercial area on the ground and the first floor to ensure privacy and safety to tenants. In addition, the entrance lobby is designed with a waiting & meeting area for visitors, limiting visitors' access to apartment floors.

Parking is arranged at the basement, ground and first floor with the basement exclusively for car parking. Amenities such as the pool and playgrounds are at ground level. At the same time, all utility services are located at the service lobby to avoid direct contact with any service team member. A separate service elevator will be allocated for the use of the service team for transporting furniture items and trash bins.

## 1.0 PROJECT PROGRESS REPORT BREIF

- 1.1 All permits and project documentation requirements are submitted and process accordingly.
- 1.2 Drawings and details are submitted and approved.
- 1.3 All land concern and preparation are addressed in coordinated according to the local government requirements.
- 1.4 All necessary activities and preparation are in progress.

## 2.0 CURRENT STATUS

### 2.1 Materials and Equipment's Procurement

#### 2.1.1 Material and Equipment Received

##### 2.1.1.1 N/A

### 2.2 Project Progress Meeting by HDC

#### 2.2.1 Date: No Meeting was conducted

### 2.3 Site Coordination Meeting with Consultants

#### 2.3.1 Date: Mar. 26, 2023

### 2.4 Issue for Construction Drawing

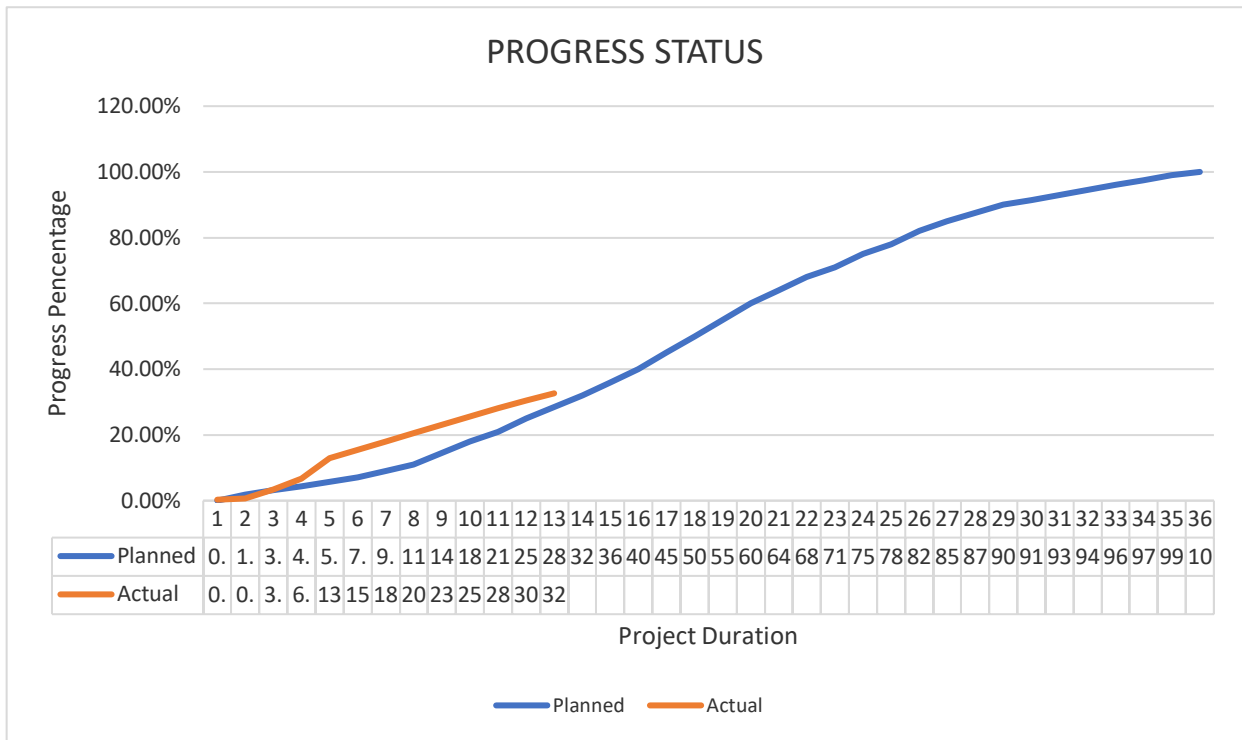
#### 2.4.1 Structural drawings

##### 2.4.1.1 Structural Floor Plans – Partial Received

#### 2.4.2 Architectural drawings

##### 2.4.2.1 Architectural Floor Plans – Partial Received

### 2.5 Project Status



### 3.0 ONGOING/COMPLETED WORKS

- 3.1 Sixth floor beam and slab formworks fabrication and installation
- 3.2 Sixth floor beam and slab reinforcement fabrication and installation
- 3.3 Concrete casting for Sixth floor beam and slab (7th slab)
- 3.4 Sixth floor columns, lift wall and stair reinforcement fabrication and installation
- 3.5 Sixth floor columns, lift wall and stair formworks fabrication and installation
- 3.6 Concrete casting for sixth floor columns, lift wall and stair
- 3.7 Seventh floor beam and slab formworks fabrication and installation
- 3.8 Seventh floor beam and slab reinforcement fabrication and installation
- 3.9 Seventh floor plumbing and electrical sleeve installation
- 3.10 Second floor masonry preparation and block laying
- 3.11 Fourth and Fifth floor slab de-shuttering works
- 3.12 Safety net installation

#### **4.0 UPCOMING WORKS FOR NEXT MONTH**

- 4.1 Seventh floor beam and slab formworks fabrication and installation
- 4.2 Seventh floor beam and slab reinforcement fabrication and installation
- 4.3 Seventh floor plumbing and electrical sleeve installation
- 4.4 Concrete casting for Seventh floor beam and slab (8th slab)
- 4.5 Eighth floor columns, lift wall and stair reinforcement fabrication and installation
- 4.6 Eighth floor columns, lift wall and stair formworks fabrication and installation
- 4.7 Concrete casting for eighth floor columns, lift wall and stair
- 4.8 Basement ramp slab reinforcement fabrication and installation
- 4.9 Fifth and Sixth floor de-shuttering work
- 4.10 Second floor masonry block laying and plastering work
- 4.11 Third floor masonry works preparation
- 4.12 Safety net installation

#### **5.0 ACCIDENT REPORT**

- 5.1 No accident reported

#### **6.0 CHALLENGES FACED DURING CONSTRUCTION / IMPLEMENTATION**

- 6.1 Weather disturbance due to isolated heavy rains (weather chart)
- 6.2 Reduced working hours (During Ramadan month)

#### **7.0 INSTRUCTION GIVEN ON SITE**

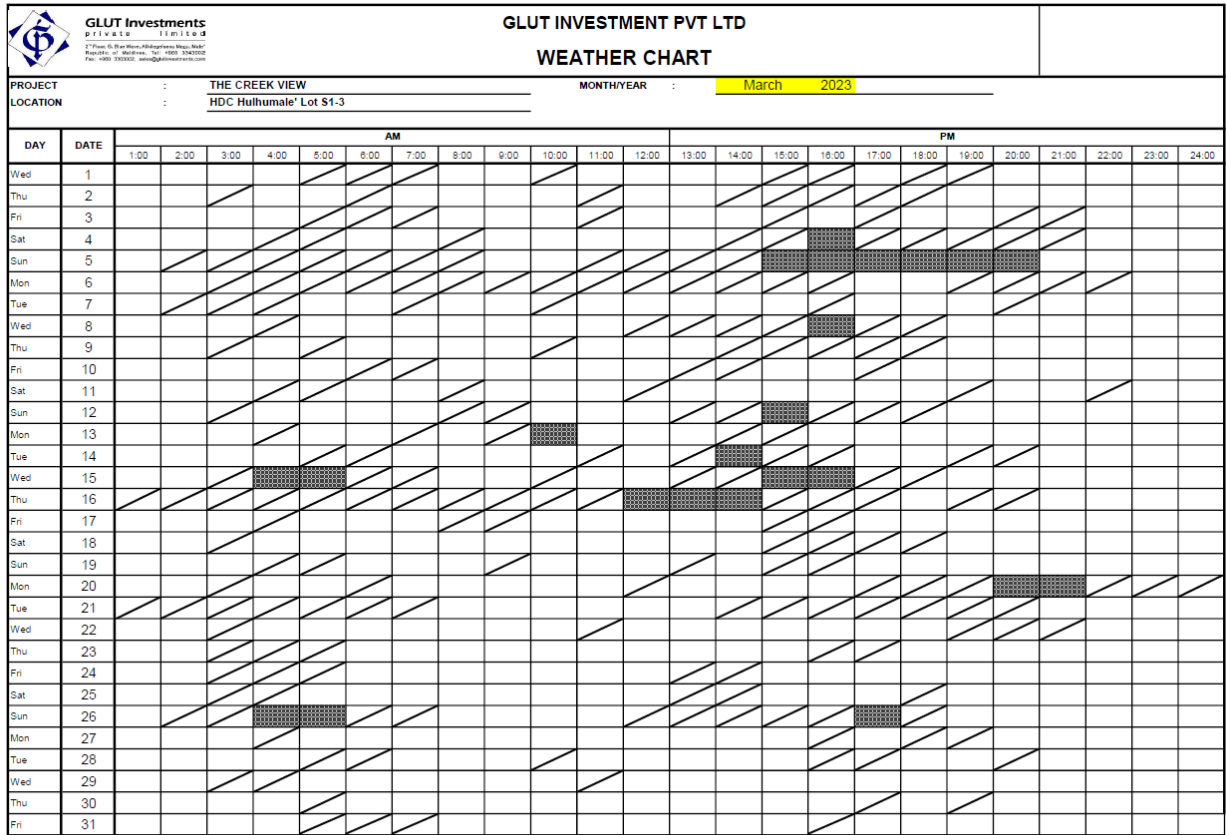
- 7.1 N/A

#### **8.0 DOCUMENTATION OF APPROVED MATERIALS**

- 8.1 Cube Test Report
  - 8.1.1 Fifth Floor Columns and Lift wall
  - 8.1.2 Sixth Floor Slab (7<sup>th</sup> Slab)
  - 8.1.3 Sixth Floor Columns and Lift wall

## 9.0 WEATHER CHART

9.1 March 2023



LEGEND:  FAIR/CLOUDY      CLOUDY      HEAVY RAIN      TYPHOON

2022		
Months	Rainy Days	Days to Claim
March	5	5
April	11	11
May	19	19
June	16	16
July	19	19
August	14	14
September	14	14
October	17	17
November	11	11
December	16	16
2023		
January	7	7
February	1	1
<b>March</b>	<b>9</b>	<b>9</b>

**10.0 SITE PROGRESS PHOTO**

10.1 March 2023 Site Photos



6th Floor Beam & Slab Formworks



6th Floor Beam & Slab Reinforcement



6th Floor Slab Concrete Casting



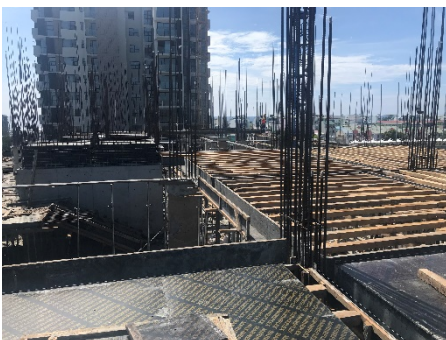
6th Floor Column Reinforcement



6th Floor Column Formworks



6th Floor Column Concrete Casting



7th Floor Beam & Slab Formworks



7th Floor Beam & Slab Reinforcement



7<sup>th</sup> Floor Plumbing Sleeve Installation



7<sup>th</sup> Floor Electrical Sleeve Installation



2<sup>nd</sup> Floor Masonry Layout



2<sup>nd</sup> Floor Block Laying



Safety Net Installation



Safety Toolbox Meeting

PREPARED AND SUBMITTED BY GLUT INVESTMENTS PVT. LTD.

**Prepared By:**

  
Rodel Rosales  
Civil Engineer (Glut)

**Checked By:**

  
Ali Riyaz  
Project Consultant